



# SH12/SH15

## Installation manual

**Dear Customer,**

Thank you for having chosen product of our company. We are confident that by the proper maintenance of sectional door it will give you satisfaction for many years.



The fitting, repair, maintenance and dismantling of sectional garage door should be carried out by specialists.

**For installer:**

- By fitting of door carefully care out the following instruction;
- The number of spring turns is approximate;
- When the door is fitted, attention must be paid to potential hazards as defined in standards EN 12604 and EN 12453.

**For user:**

- Ensure that the building is kept sufficiently dry and well ventilated to exclude the risk of corrosion;
- Before undertaking any plastering or painting near the door, it is essential to adequately protect it, as splashes of cement, plaster or paint could damage the surface;
- Protect the door from caustic, aggressive substances- failure to do so, could lead to corrosion;
- The protective film must be removed within the period of 30 days at the latest after door installation (this prescription doesn't obtain for painted doors).

**IMPORTANT NOTES**

## EN IMPORTANT!



- Before the installation/ dismantling works are started, fence the dangerous zones and zones, where the outsiders may get to. Mark the working zone by the warning sign "Forbidden access to outsiders";



- Wear the protective helmet while executing installation/ dismantling works at height;

Use the scaffold means while working at height (constructional shelving with enclosures protecting from falling). These means have to be inspected and tested; they have to satisfy the EU requirements, and be certified;

- While working on the shifting scaffolds, it is necessary to fixate the wheels protecting from spontaneous shift;
- The side protection of three parts has to be used in the small scaffolds and shifted work platforms, when the mat is at 2,0 m and bigger height (1).
- Push the small scaffolds and shifted work platforms very slowly on the smooth, firm surface free of obstacles.
- The wheels have to be reliably fastened and anchored by the brake lever (2).
- Avoid any impacts.
- Push only in the longitudinal or diagonal direction.
- Before shifting the scaffolds, protect the unprotected parts from falling.
- Do not jump on the mat.
- The bridge cannot be installed between the shifted work platforms and the building.
- It is forbidden to install the lifting mechanisms on the platforms.

- Lean the ladder only on safe points of support. Leave the ladder's bearer at least 1 m above the plane, to which people are going to climb.
- Protect the leaning ladder from slip, falling down, glissade and sinking, e.g. increase the distance between the lower supports, adjust the ladder's legs to the surface, on which they are erected, use the hitching devices to fasten the top of the ladder.
- Protect the ladder by enclosures in the movement zone.
- The ladder's legs must have protection against slip. The floors (surface) have to be smooth and not slippery;
- Erect the leaning ladder safely keeping the correct angle of erection. It has to be:
  - 65 – 75° when the leaning ladder has spokes,
  - 60-70° when the leaning ladder has stairs.



- The goggles or face protection have to be used to protect eyes during drilling works;



- The respirator has to be used to protect airways;



- Use the work tools according to the manufacturer's instructions;



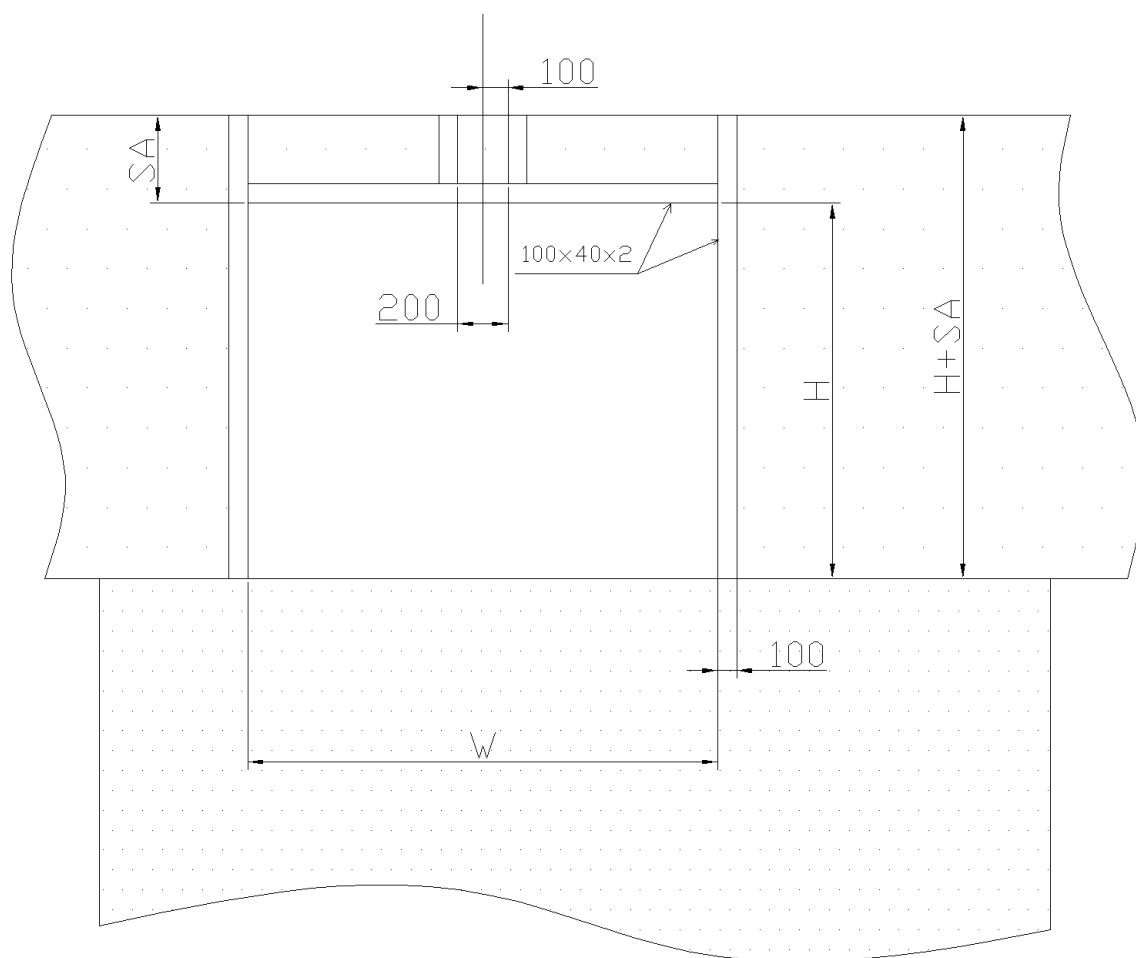
- Use personal protection equipment while working;



- Use ear-plugs to protect hearing when the work tool emits more than 85 dBa;








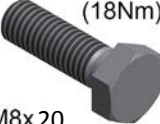


- Keep the work place tidy, clean from constructional waste and other items, which may cause hazard.



Picture from inside

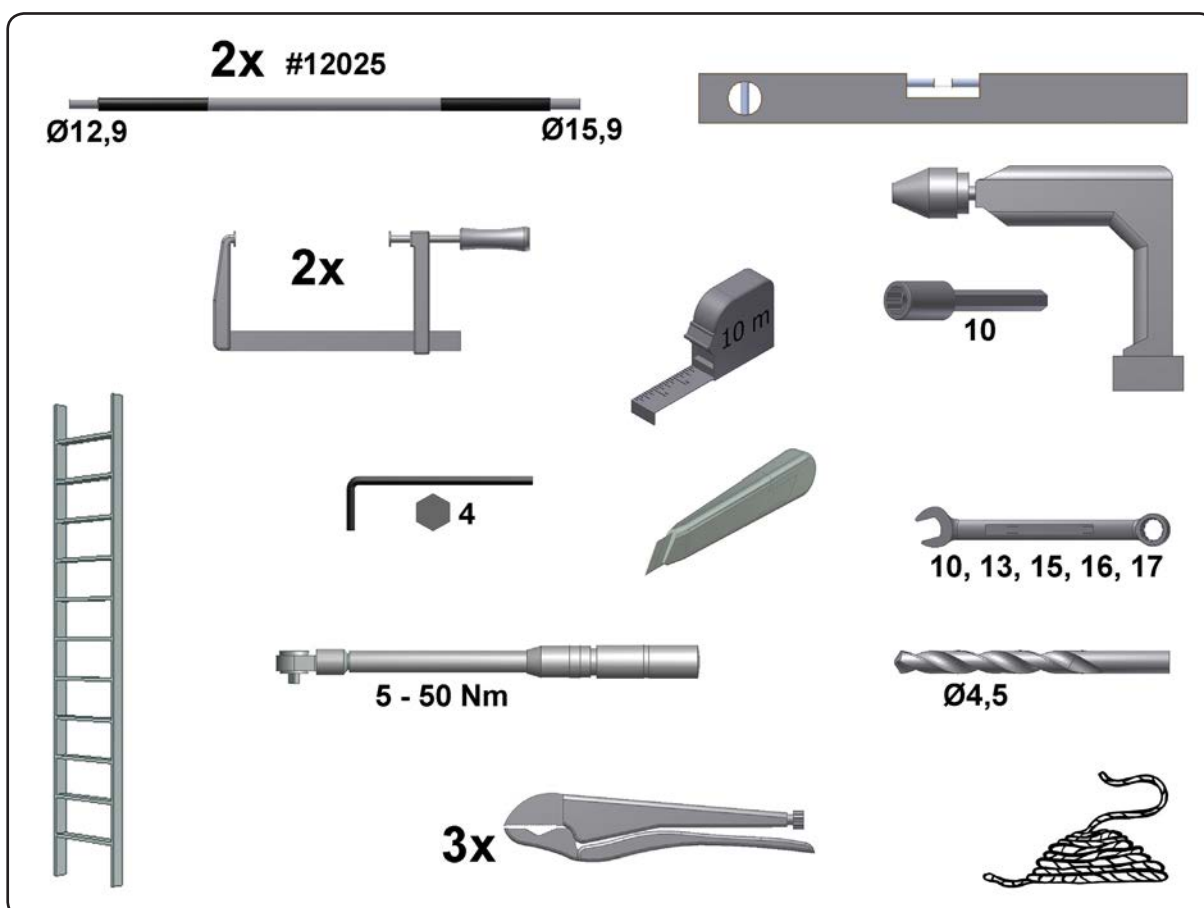
## Notes:

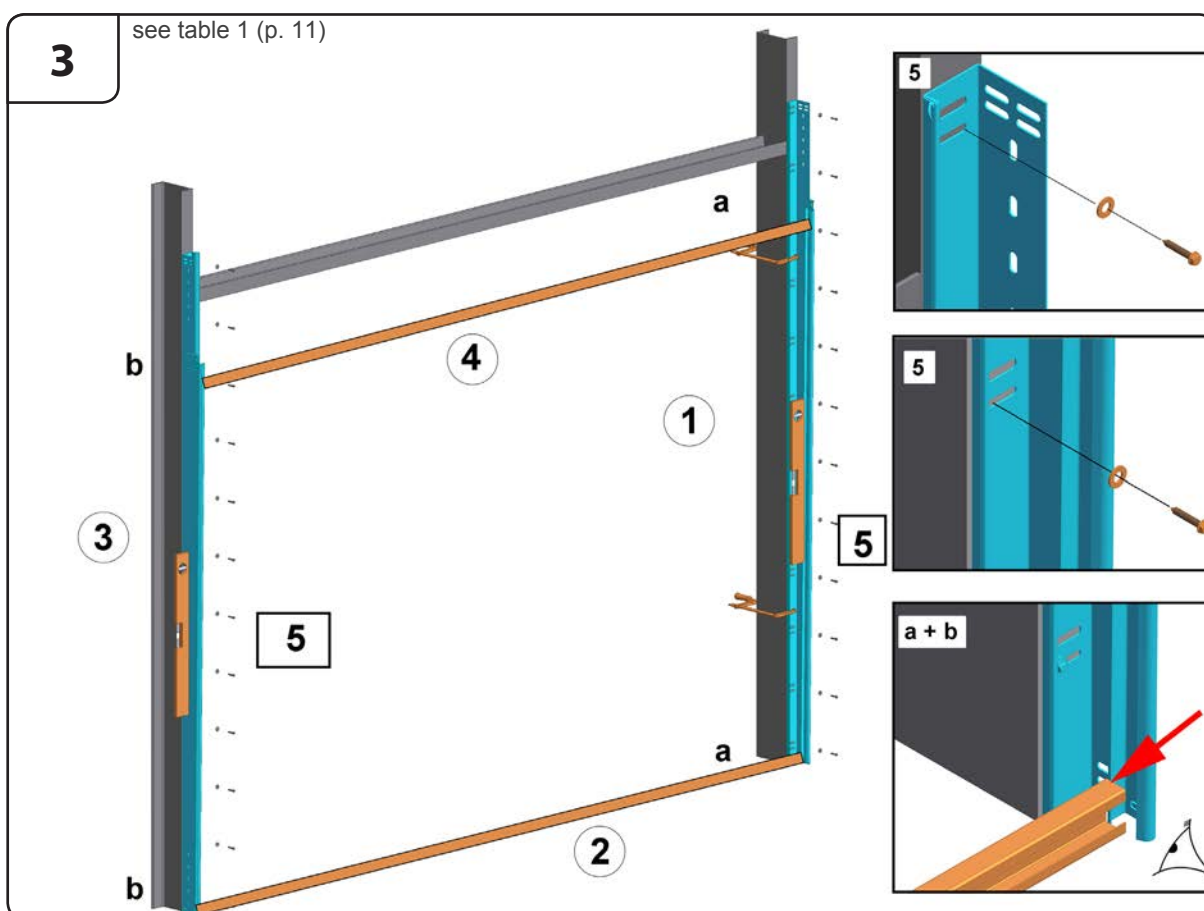
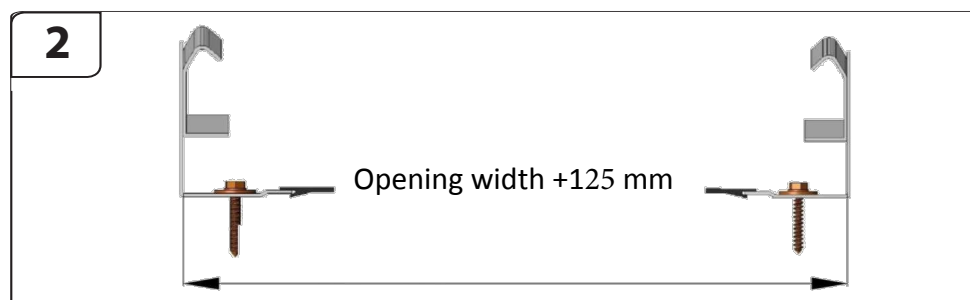
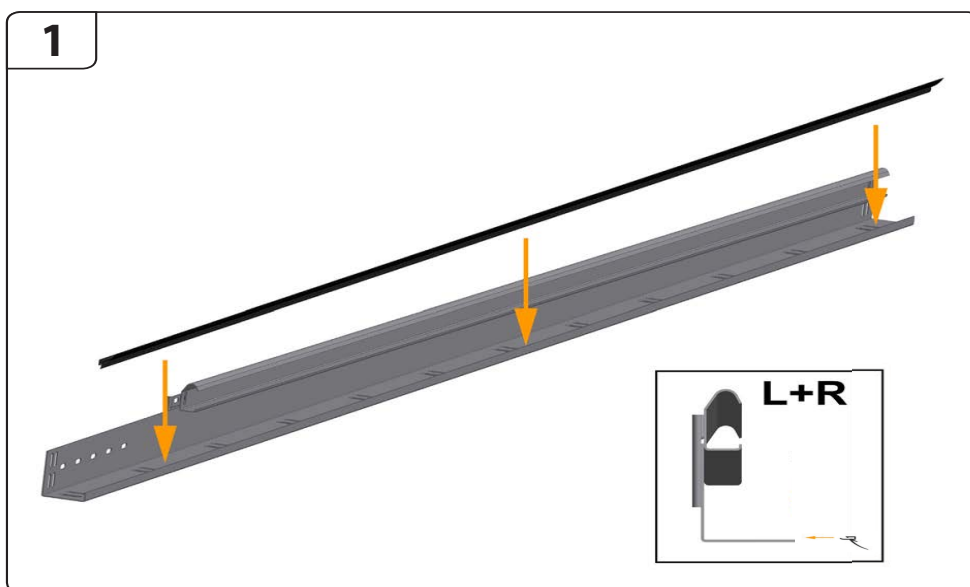
- Door frame is prepared of rectangle profile 100x40x2 mm or 100x50x3 mm;
- Door frame must be in one plate from inside;
- $SA \geq 350$  mm for lift type SH12 (IDO-HOME)
- $SA \geq 420$  mm for lift type SH15 (IDO-PRO)
- W - hole width
- H - hole height
- SA - headroom height
- H+SA - room height from the floor to ceiling

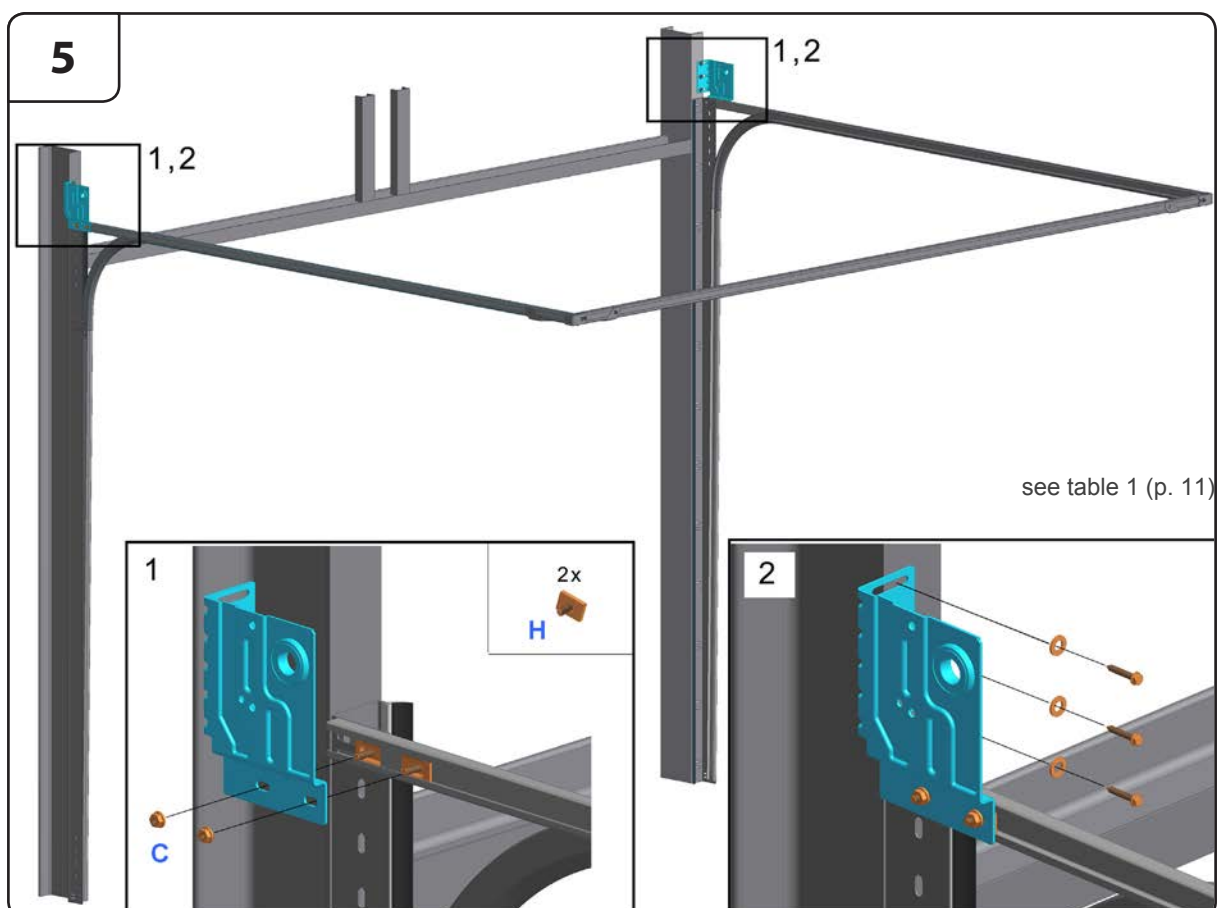
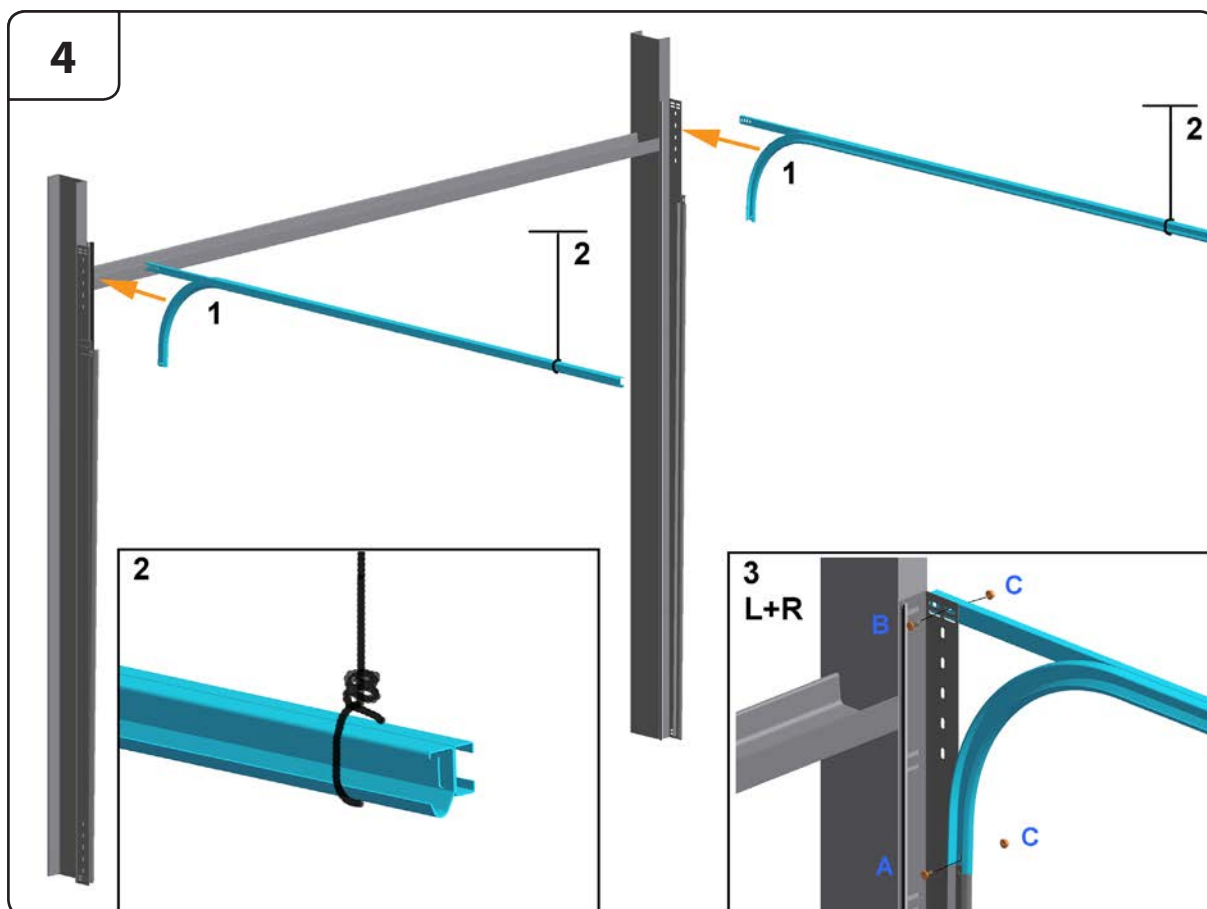
<b>A</b>  (13Nm) M8x17	<b>B</b>  (13Nm) M6x16	<b>C</b>  (13/15 Nm) M 6	<b>D</b>  (35Nm) M8
<b>E</b>  (10Nm) Ø 6.3 x25	<b>F</b>  (18Nm) M8x20	<b>G</b>  (35Nm) M10x25	<b>H</b>  M8x15 (15Nm)

**1 TABLE**

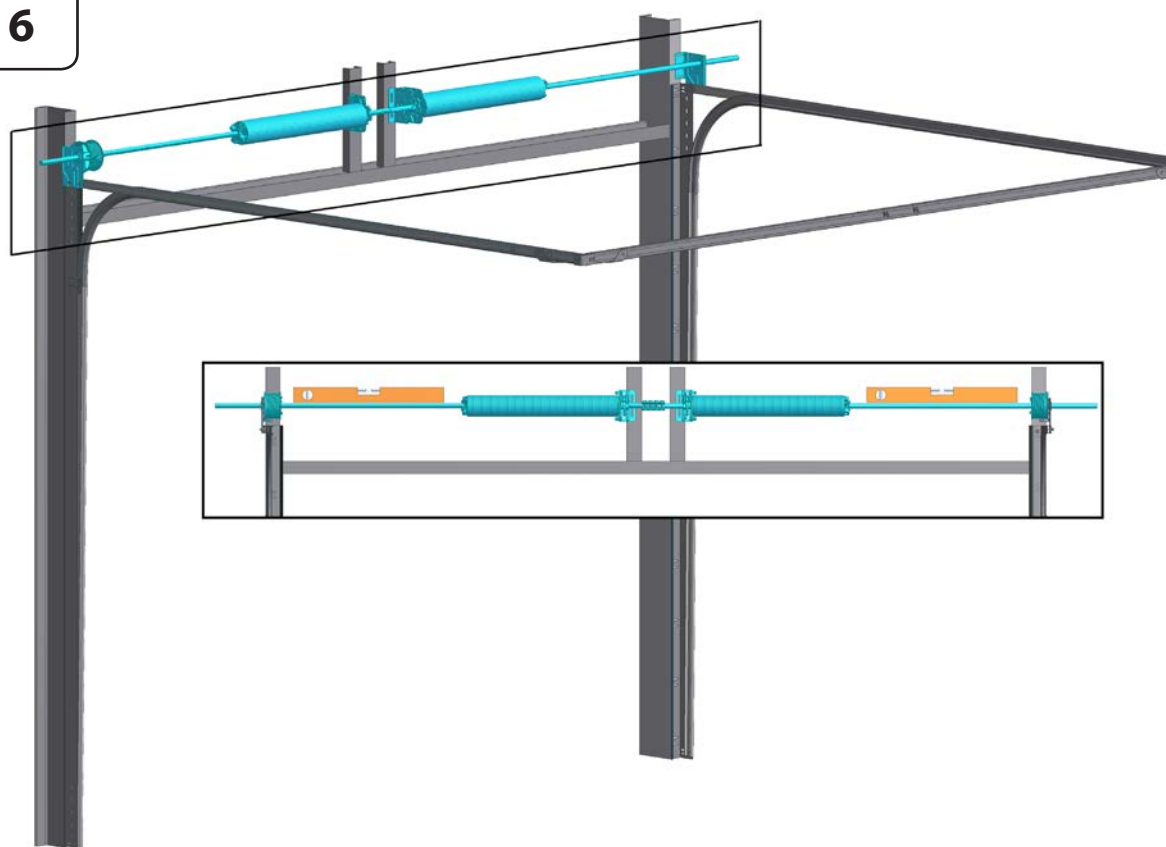
Sideroom type	Self-drilling 6.3x38	Washer M8x25	Screw 8x60	PVC plug
Steel	+	+		
Wood		+	+	
Brickwork/concrete		+	+	+
Silicate brick/block		+	+	+



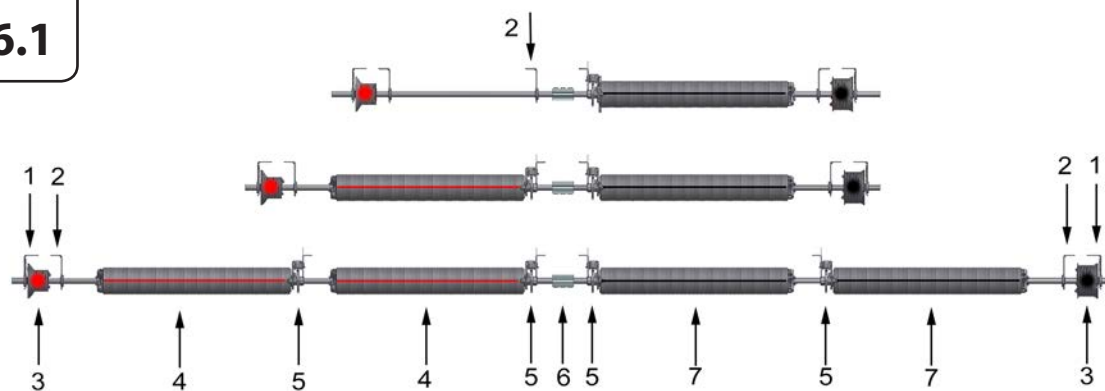




6

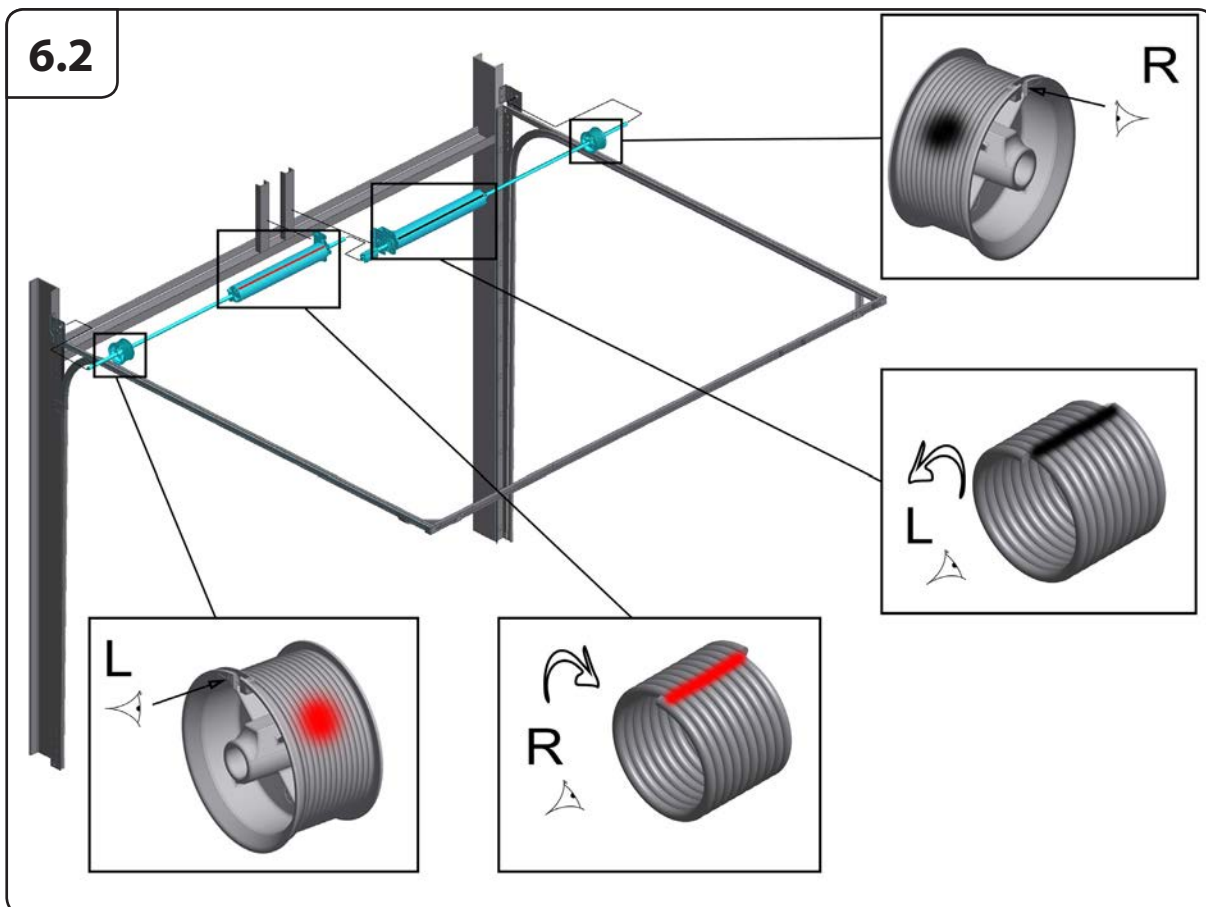


6.1

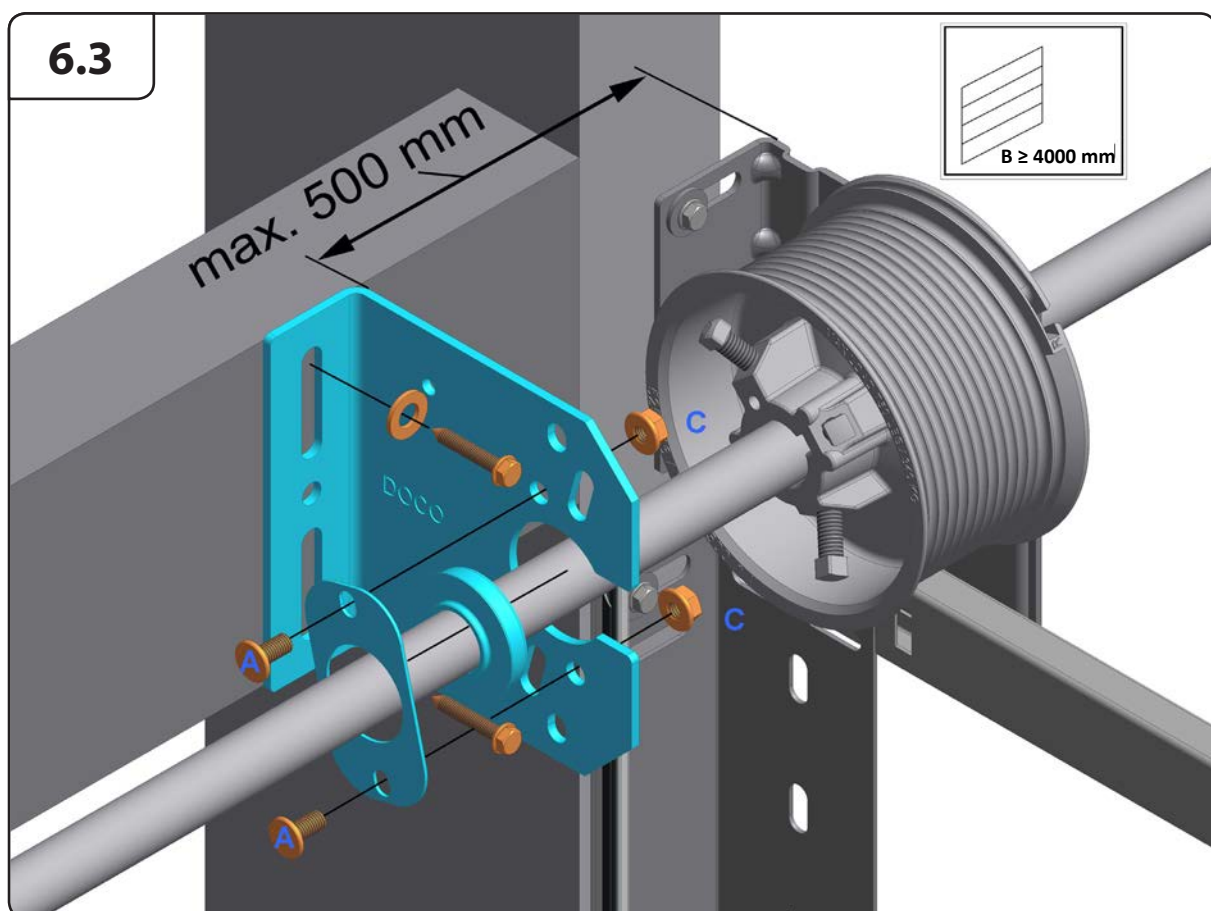


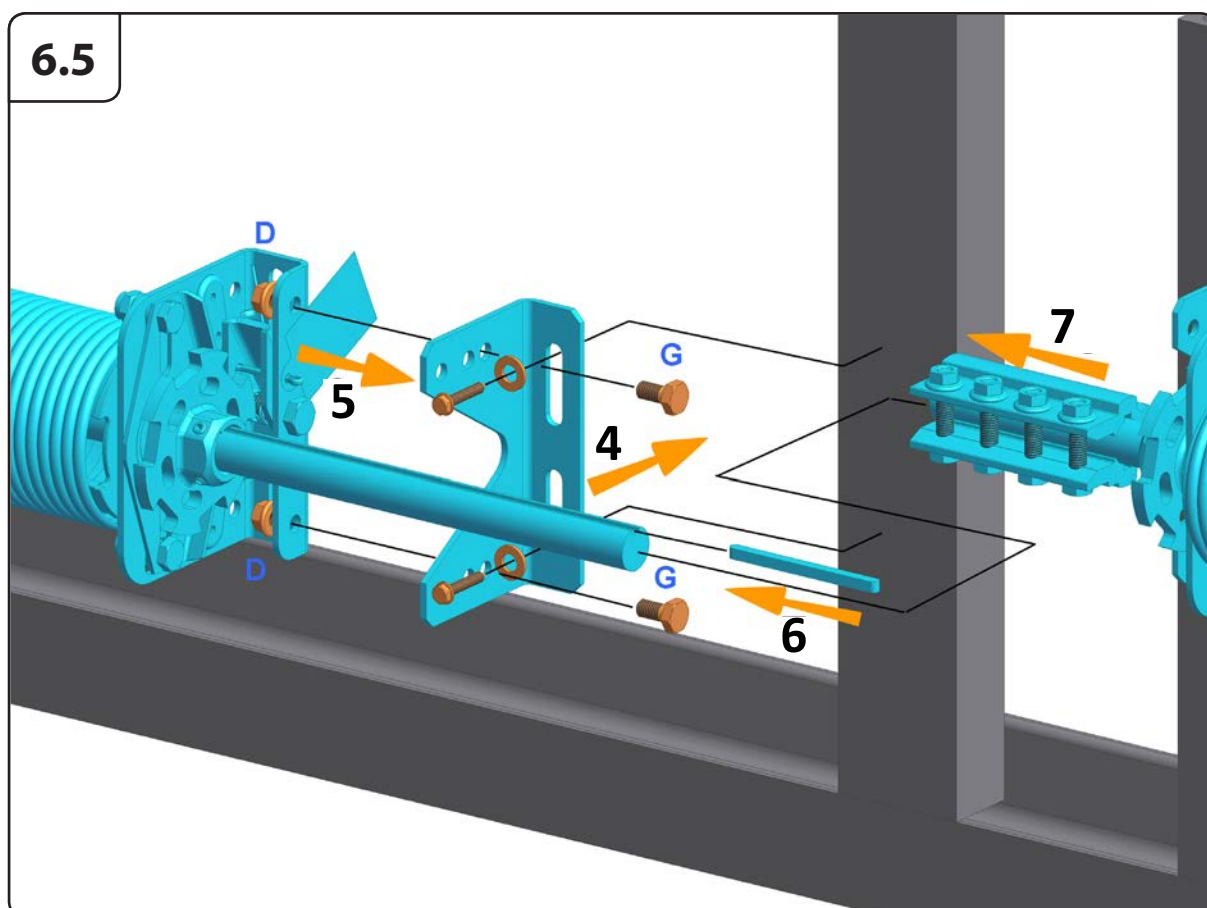
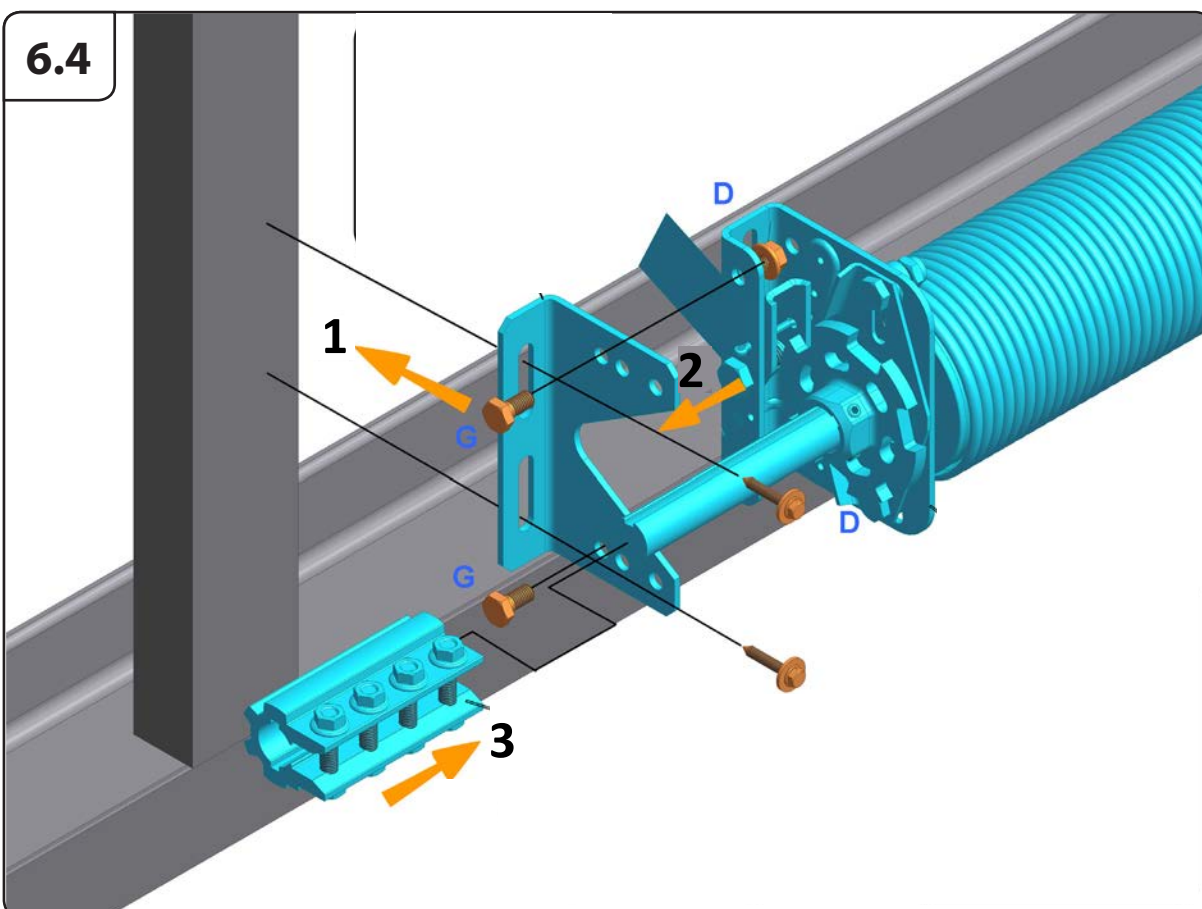
1	End bearing plate
2	Support bearing plate
3	Drum
4	Spring
5	Spring break device
6	Coupler
7	Spring

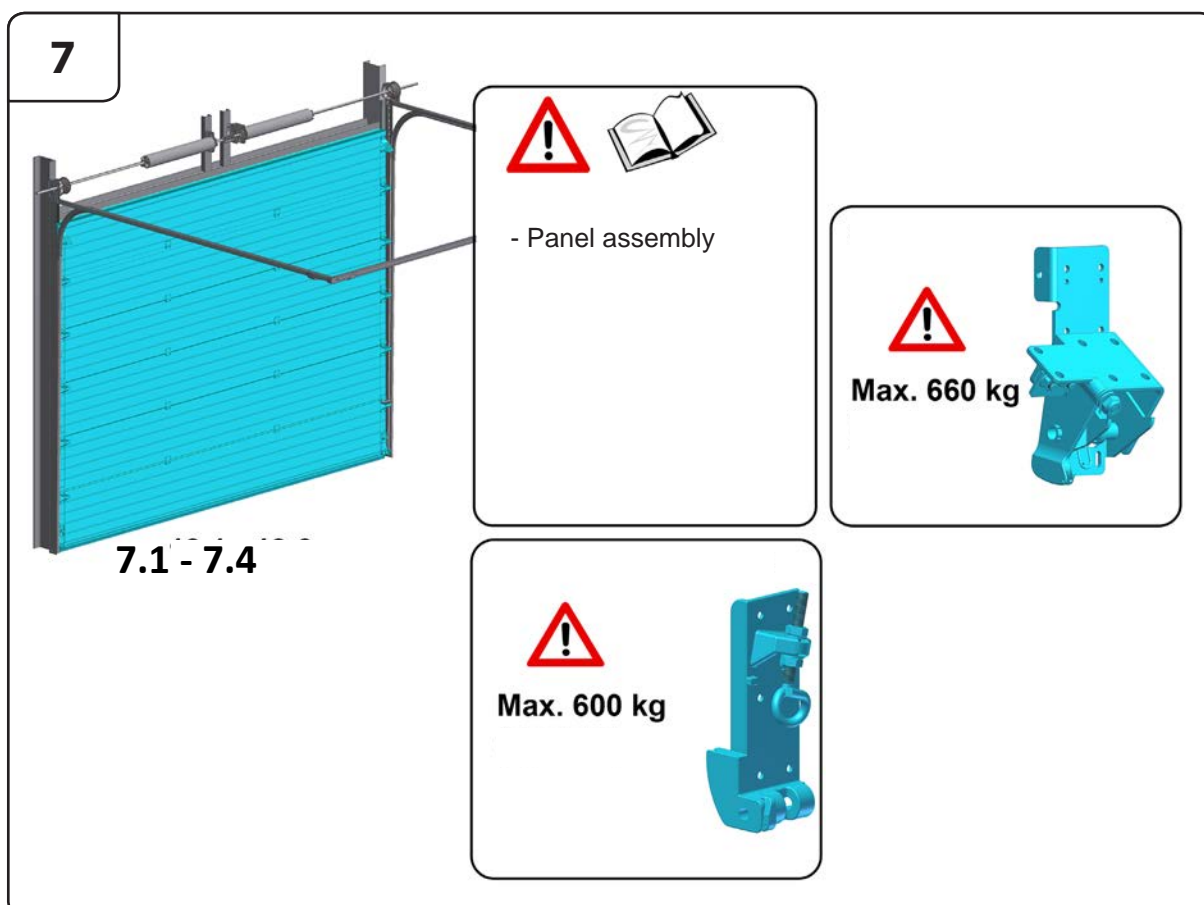
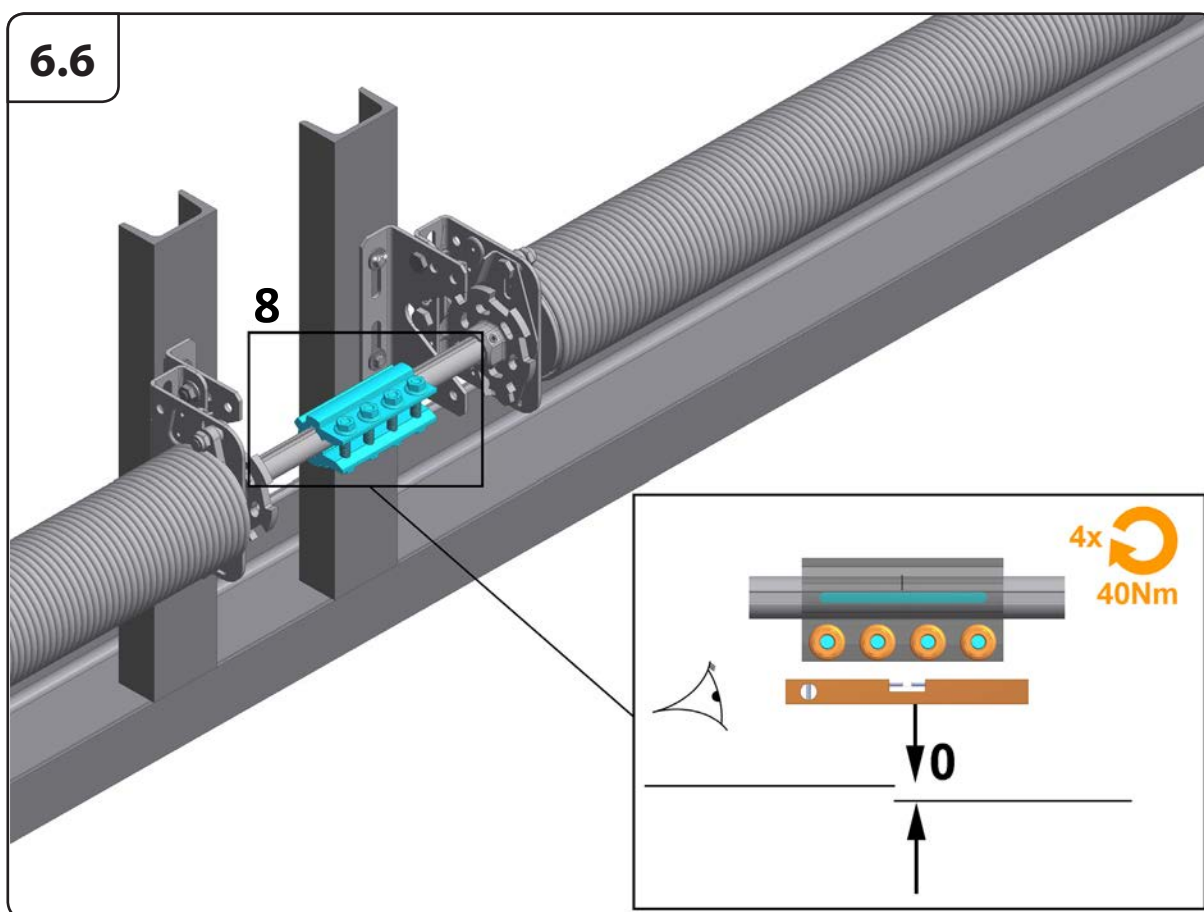
6.2

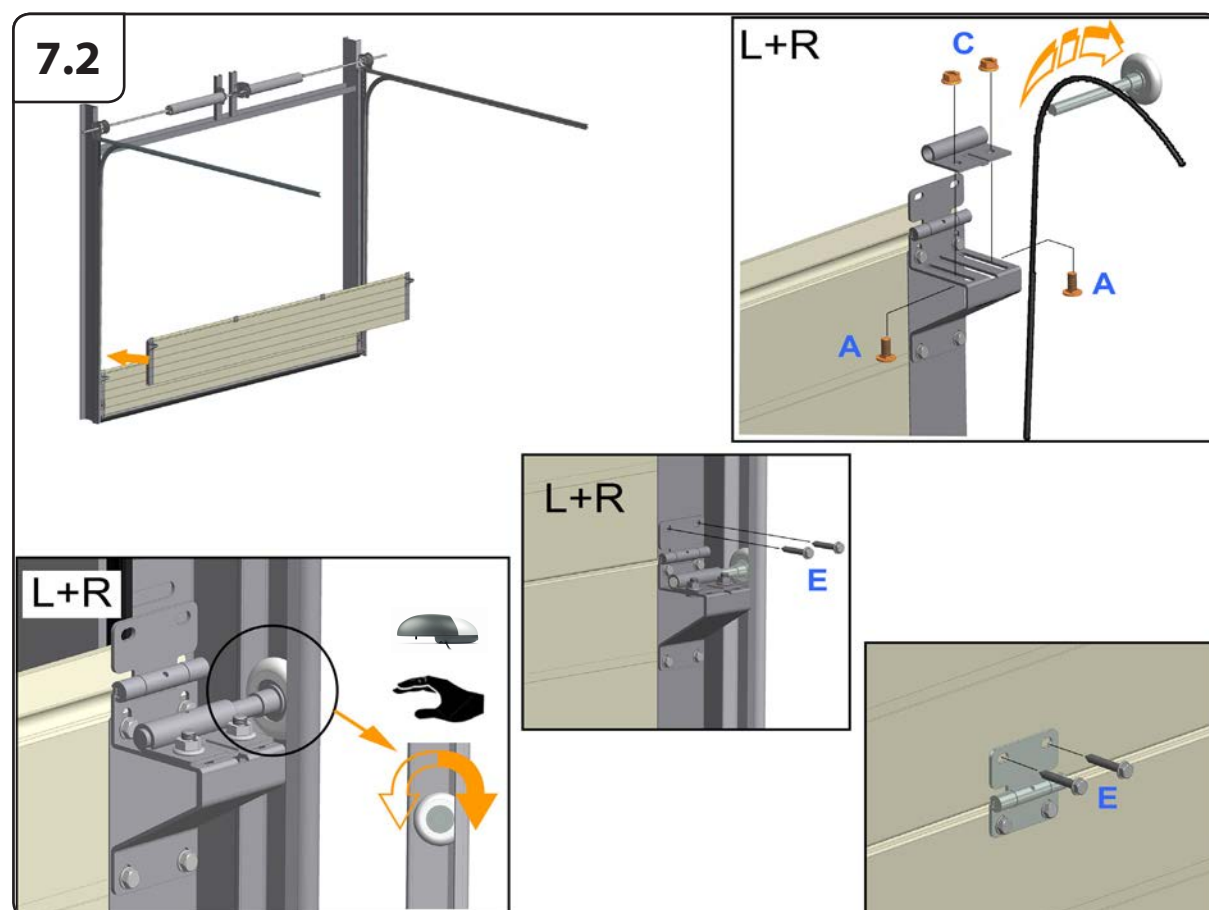
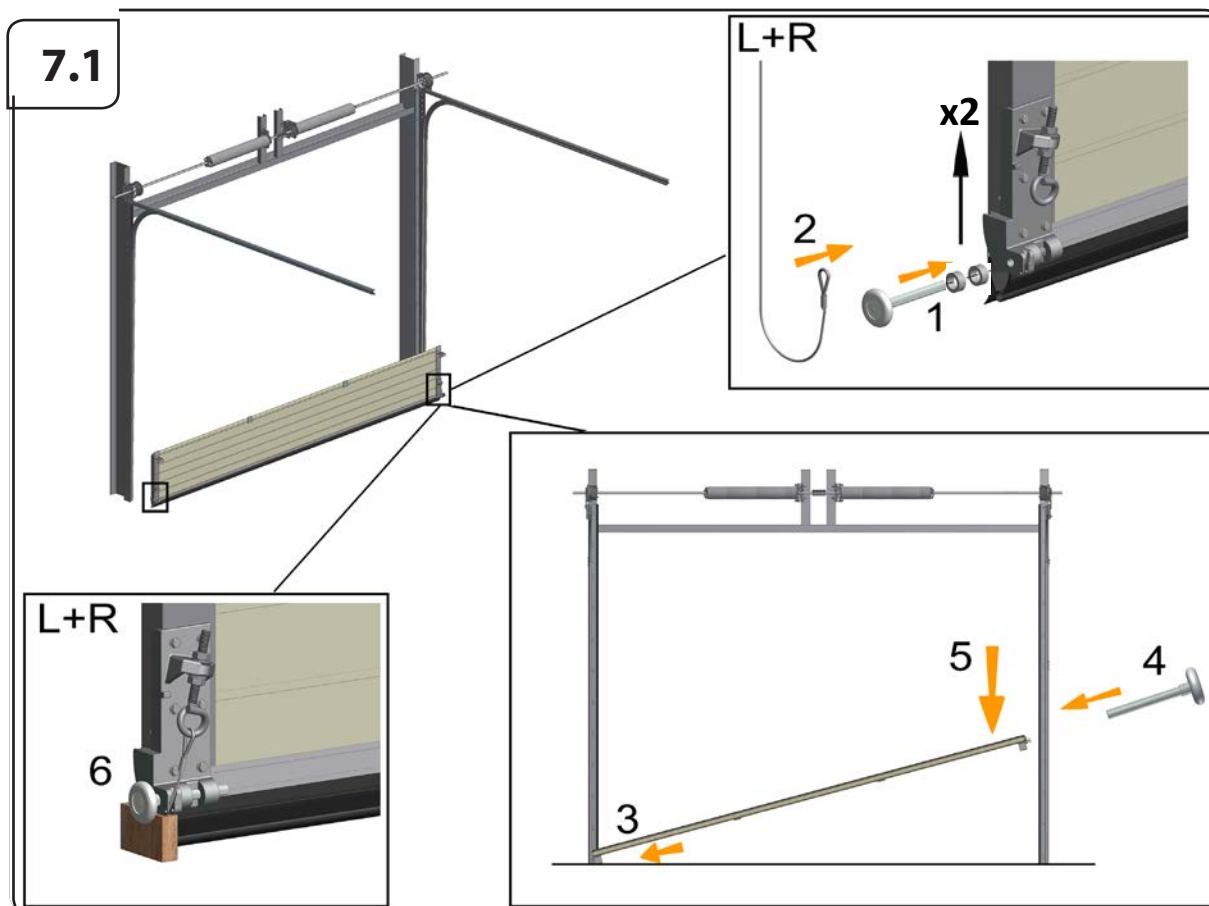


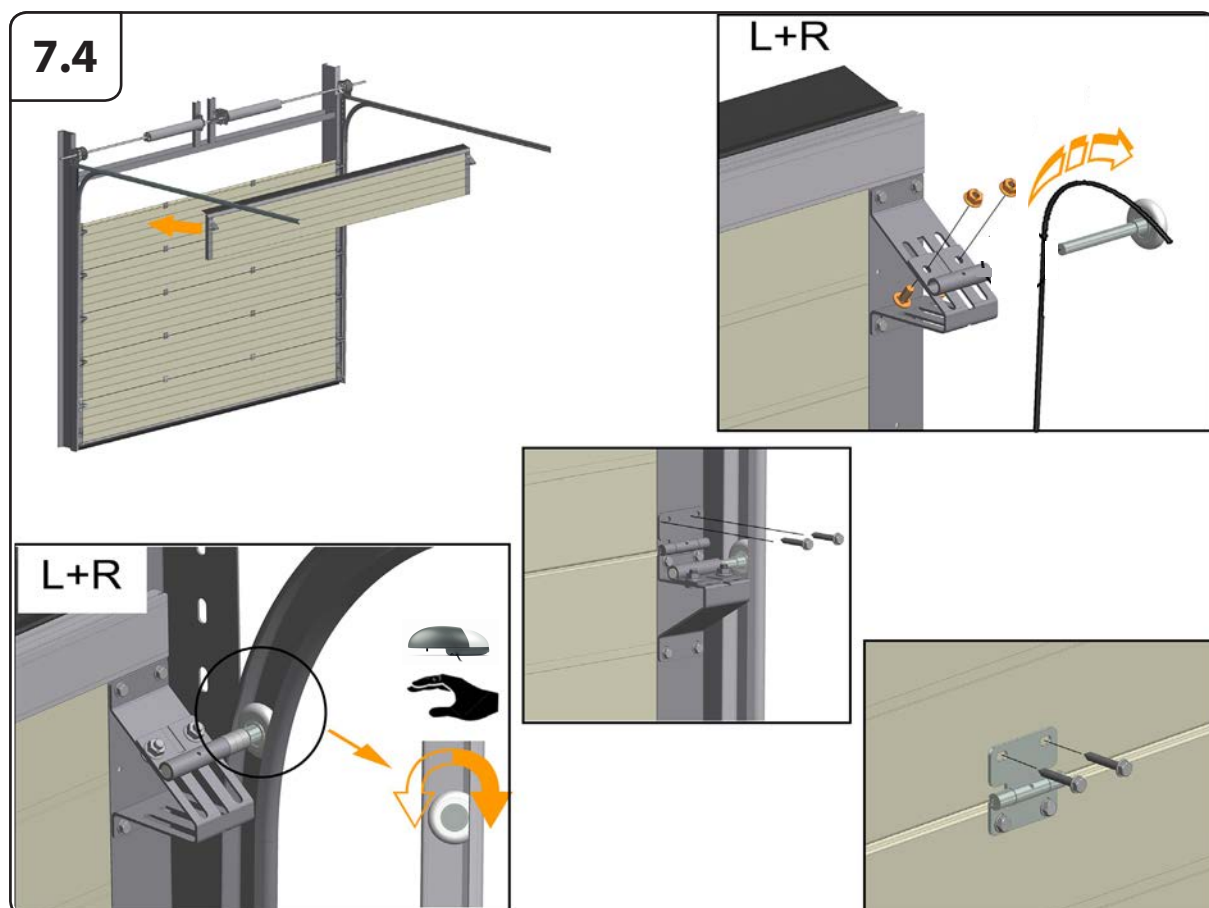
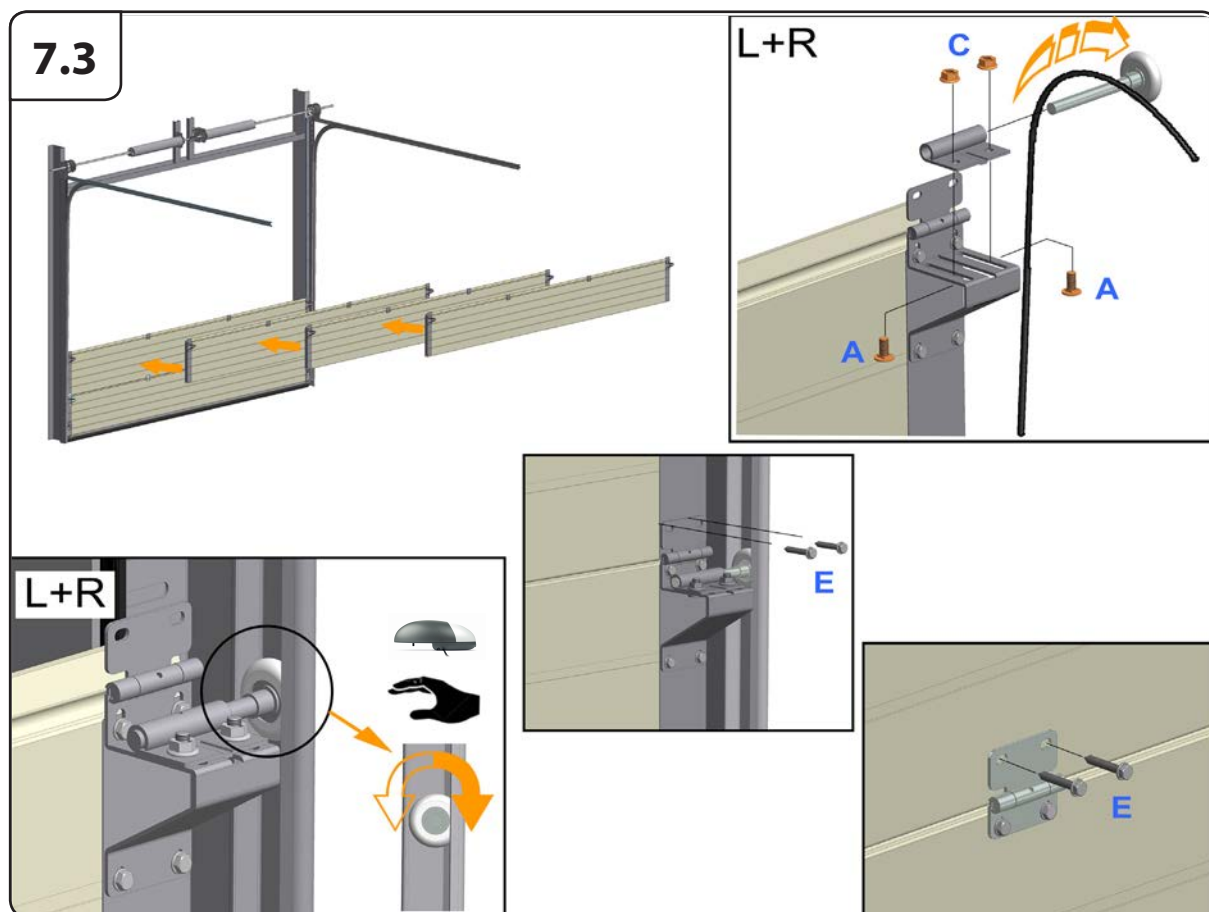
6.3

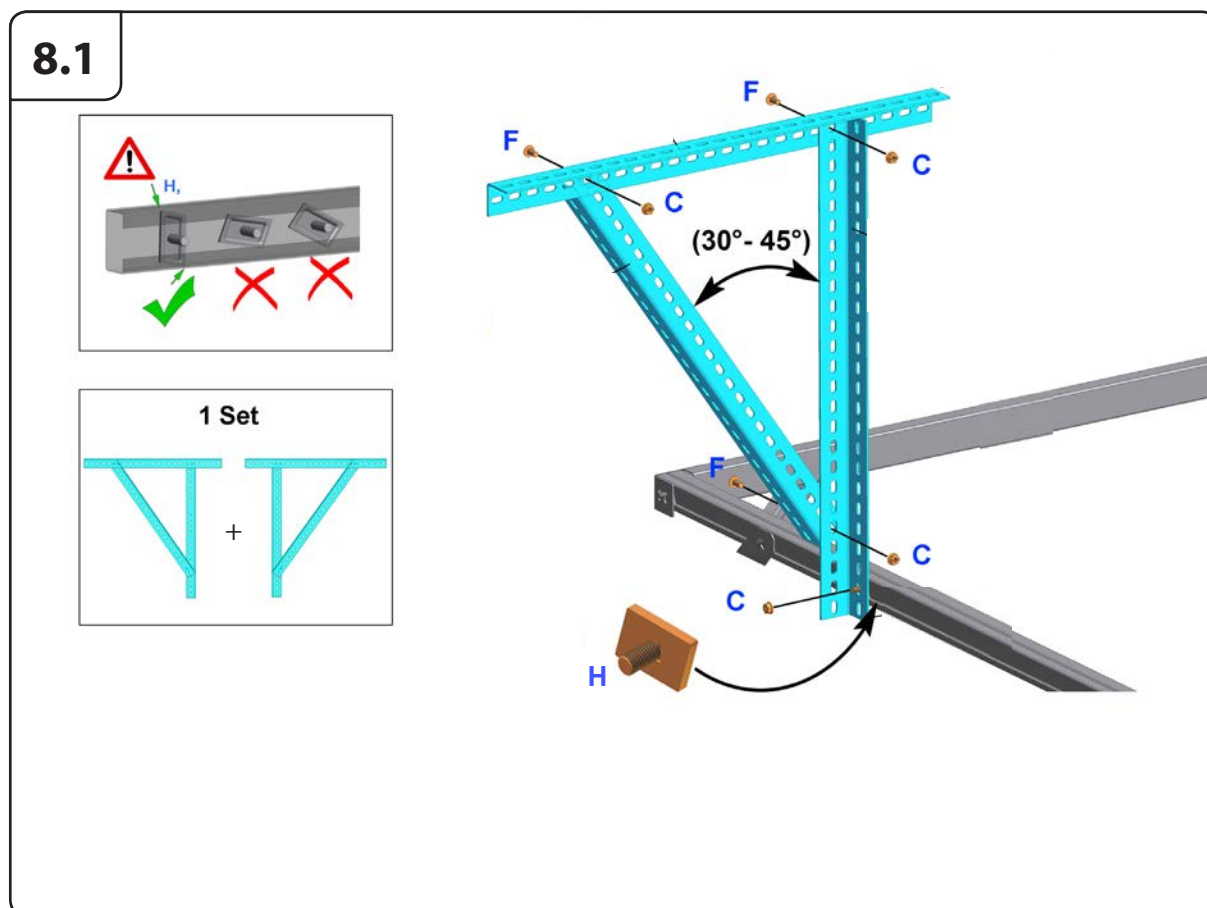
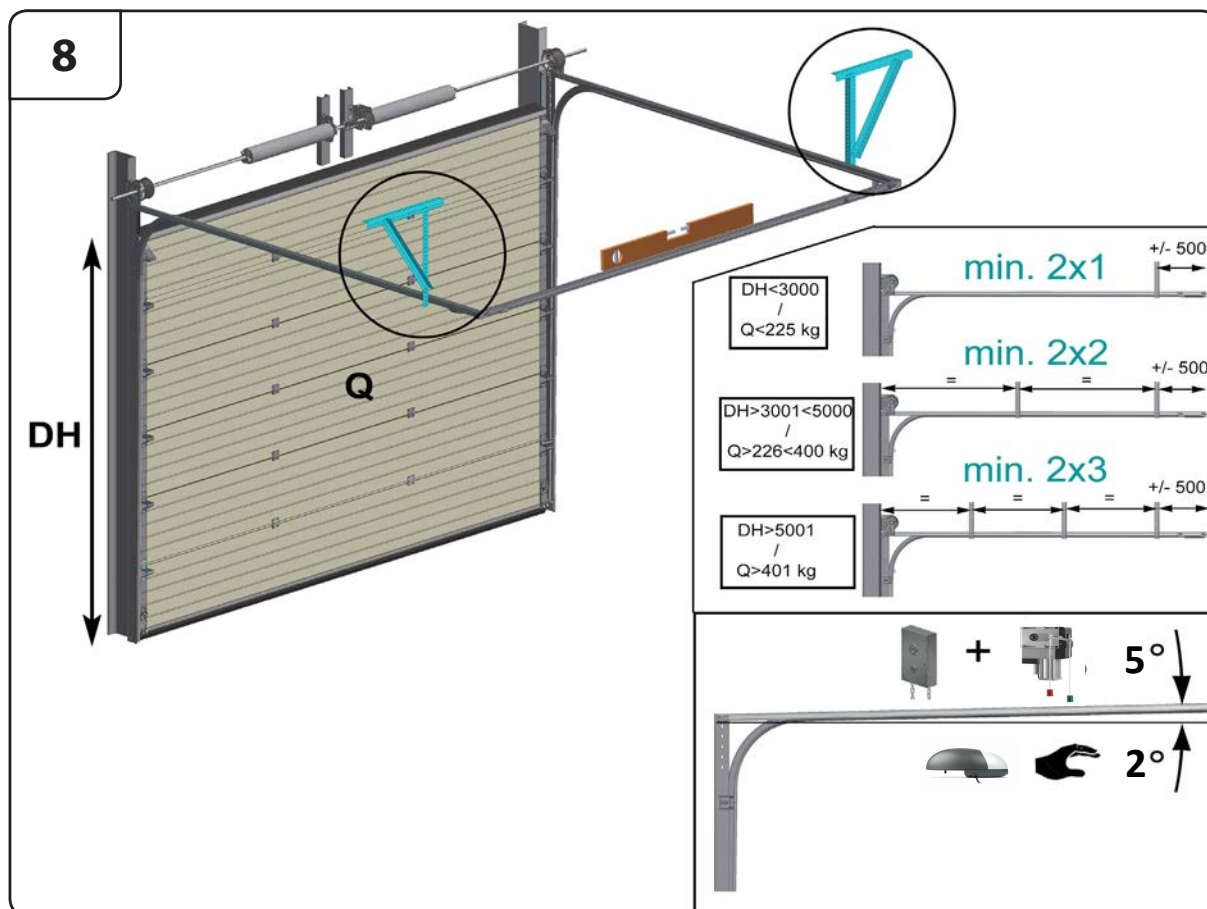


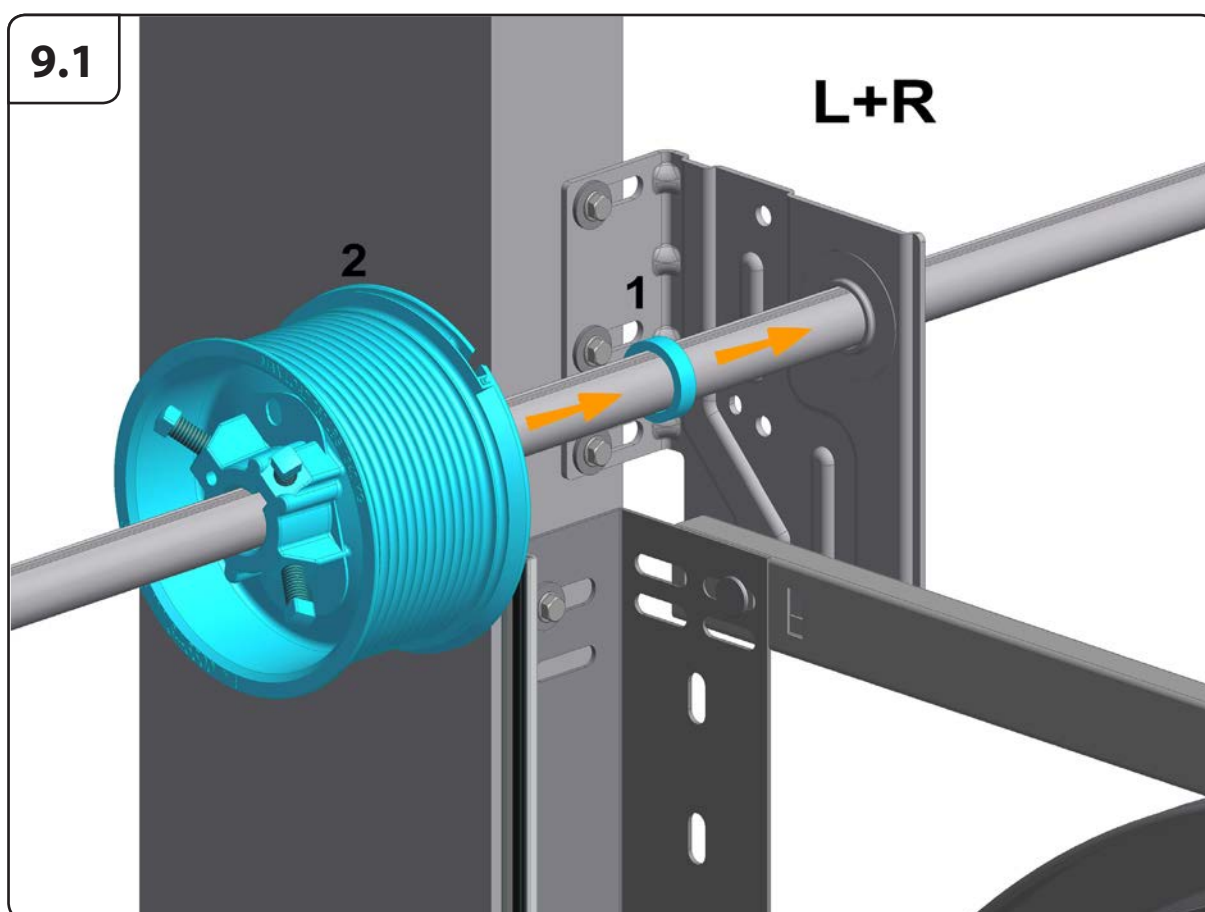
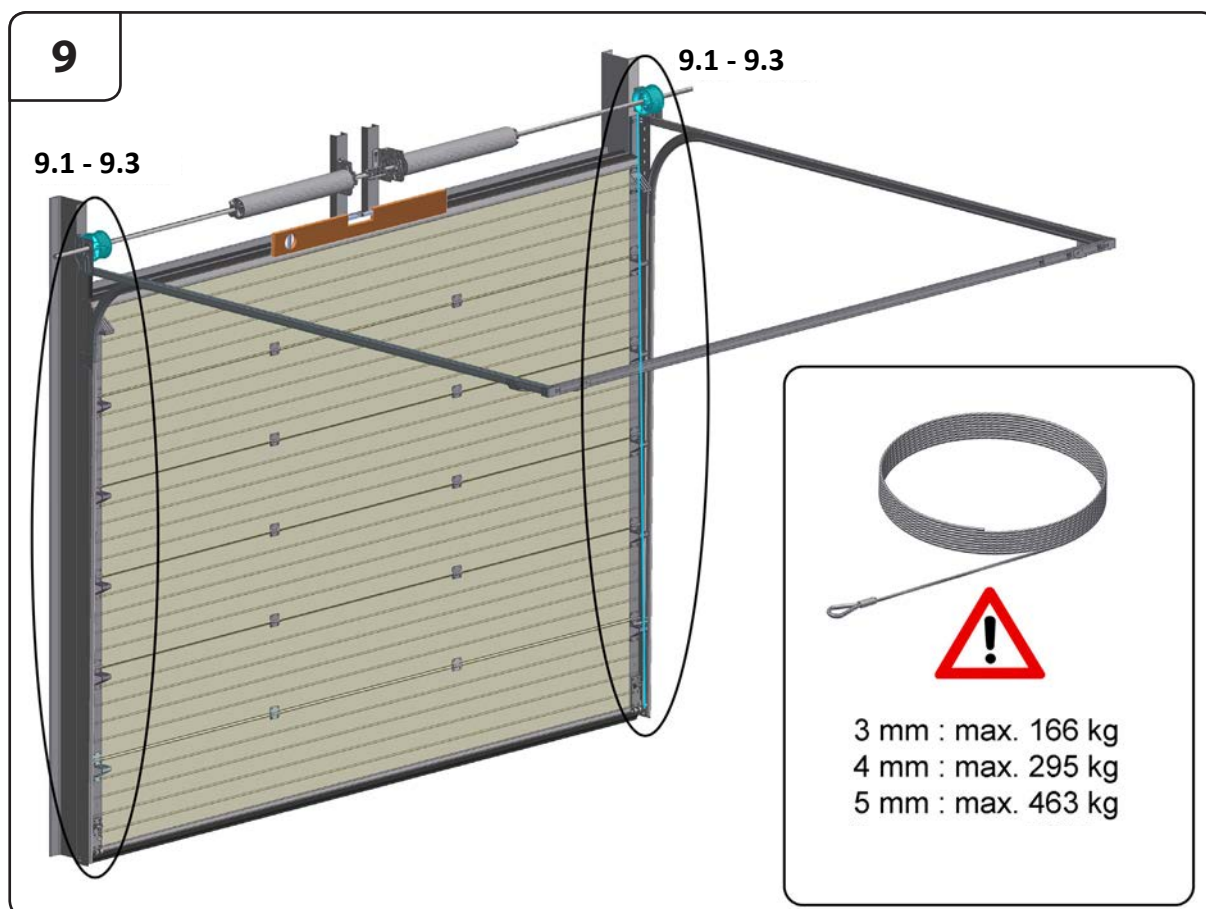


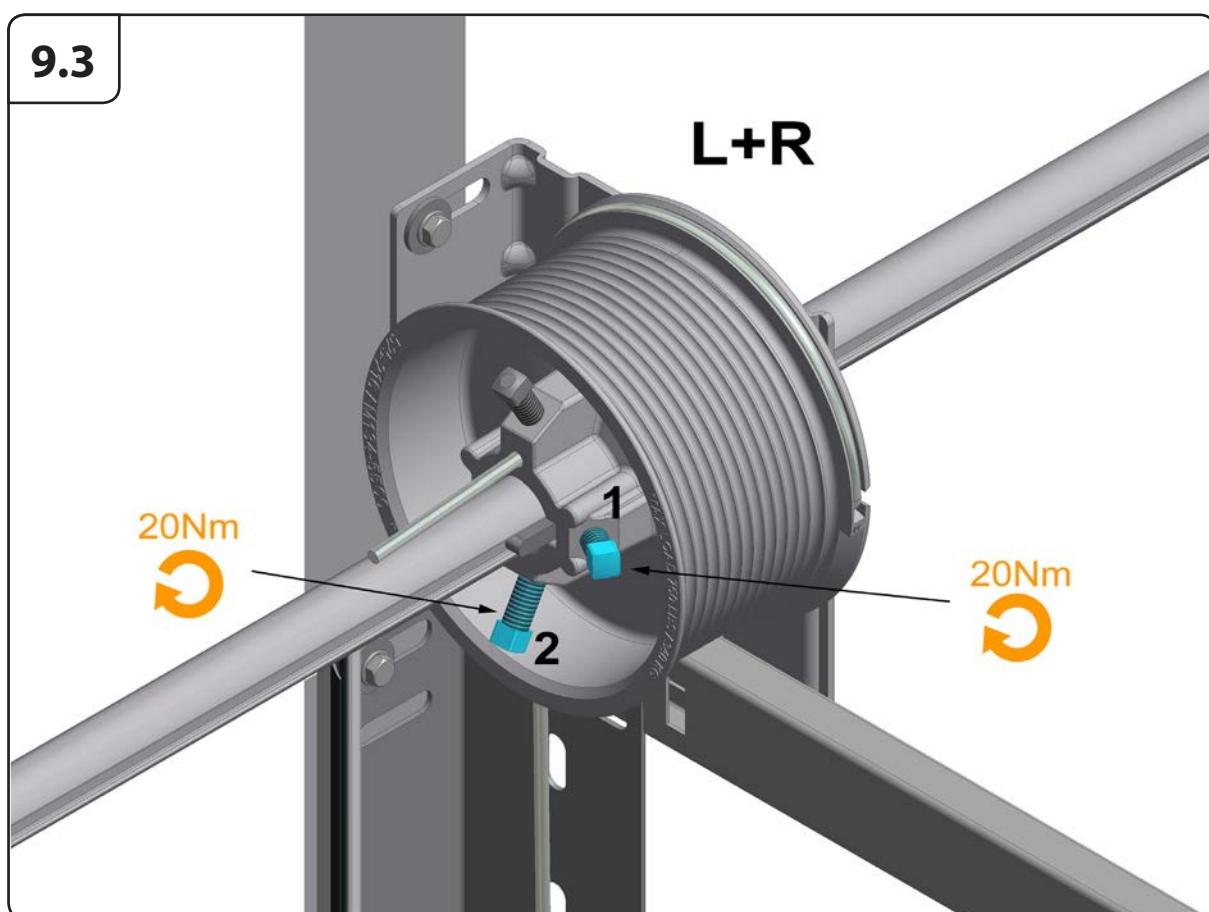
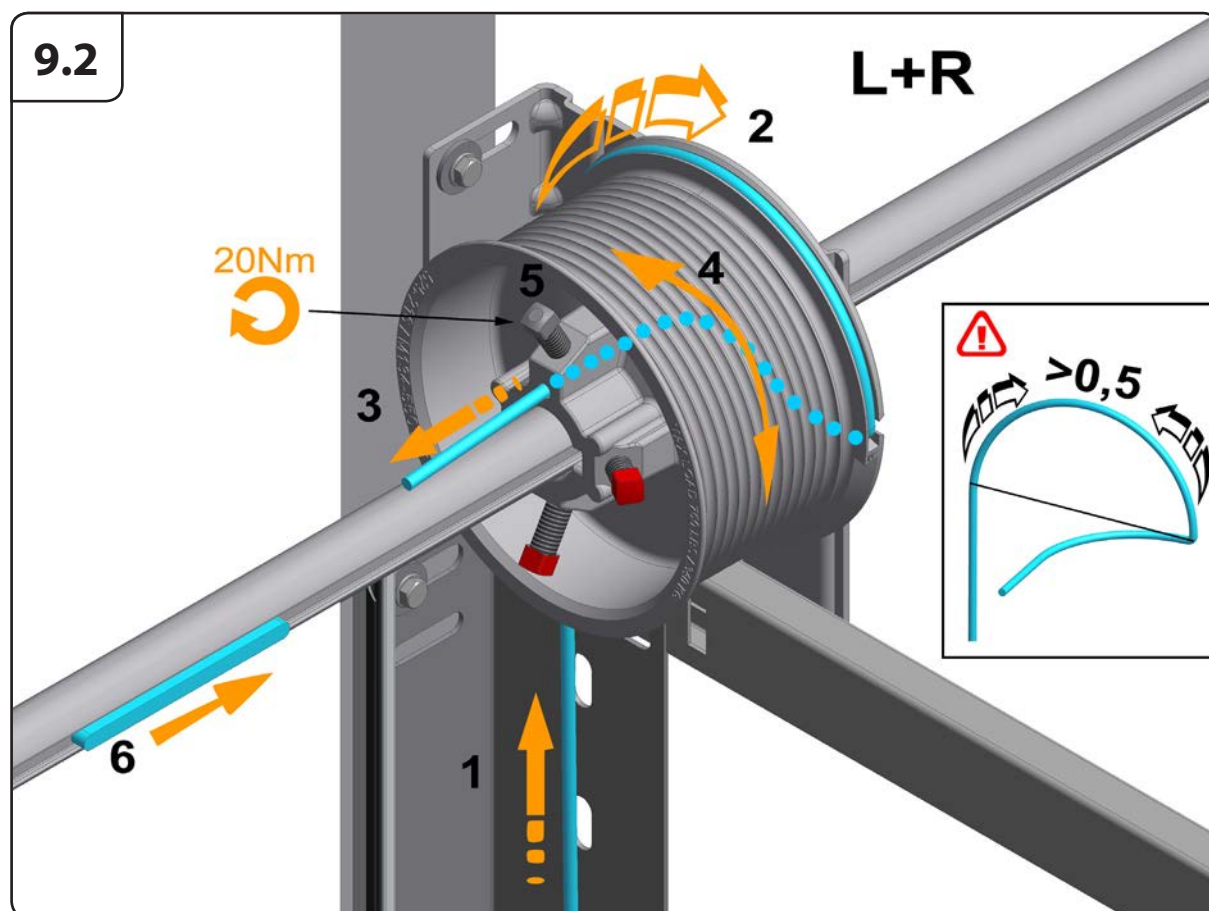


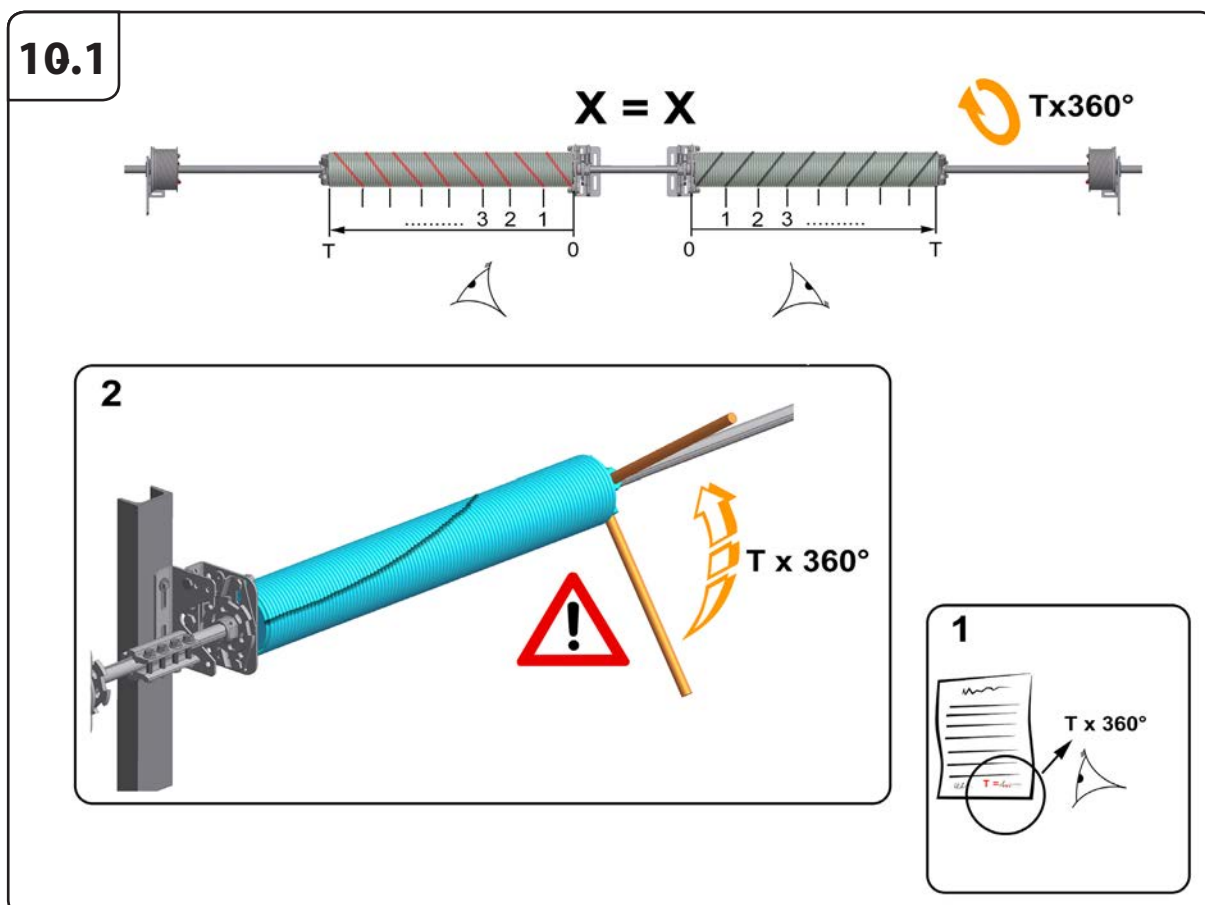
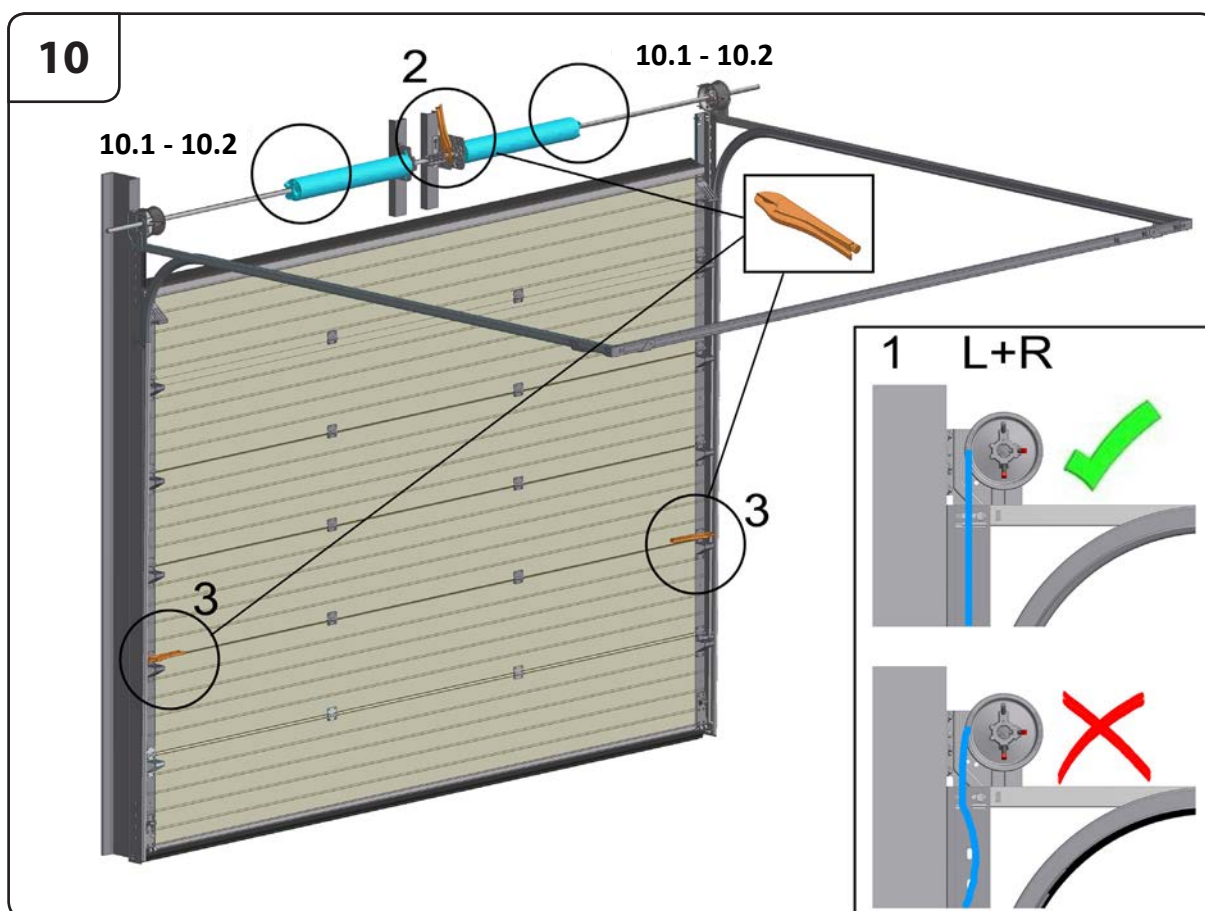




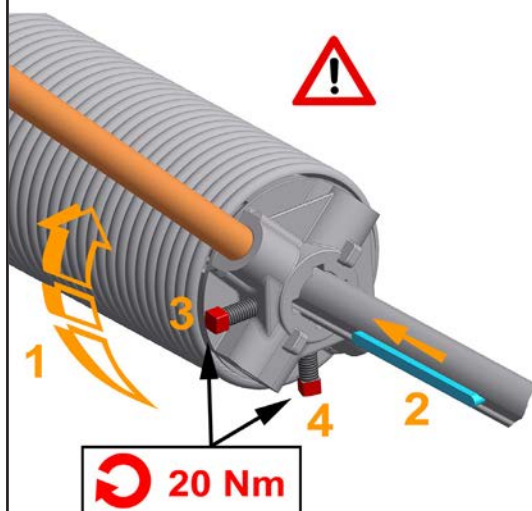




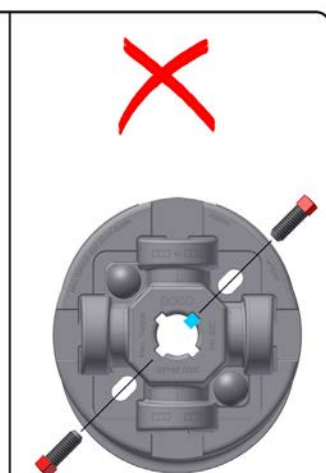
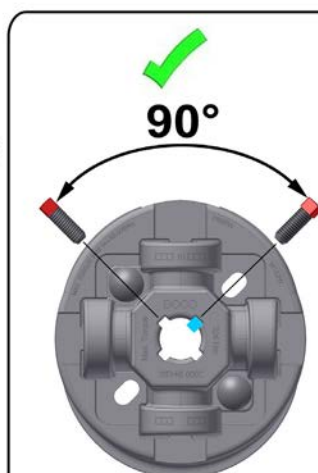




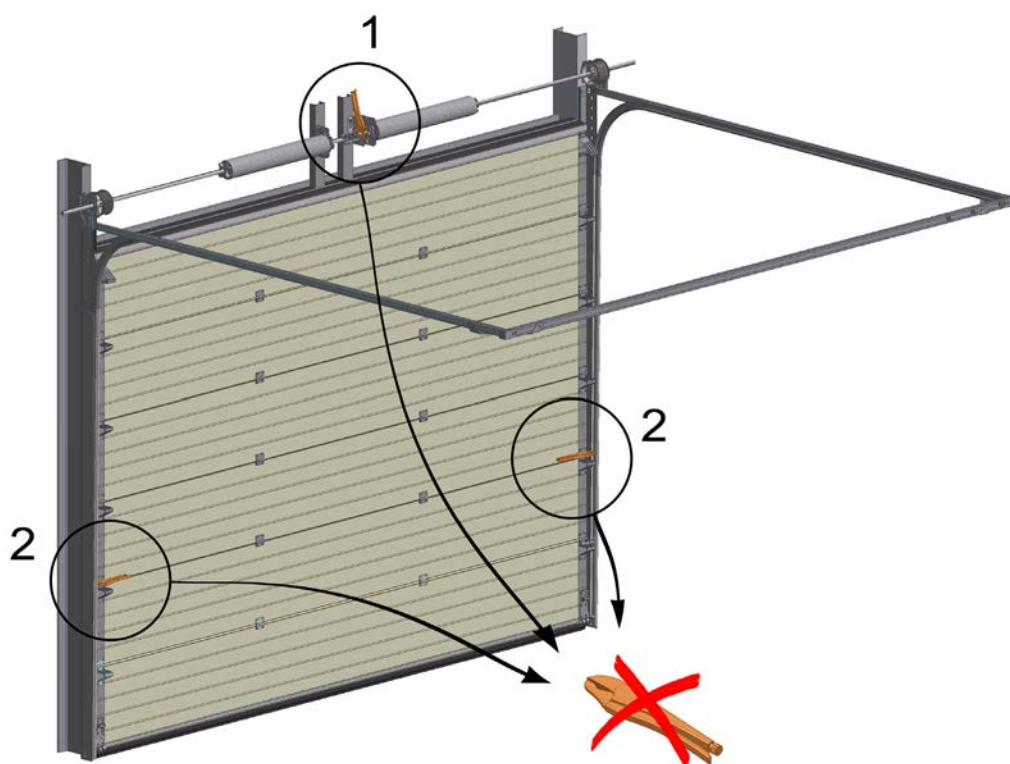
10.2



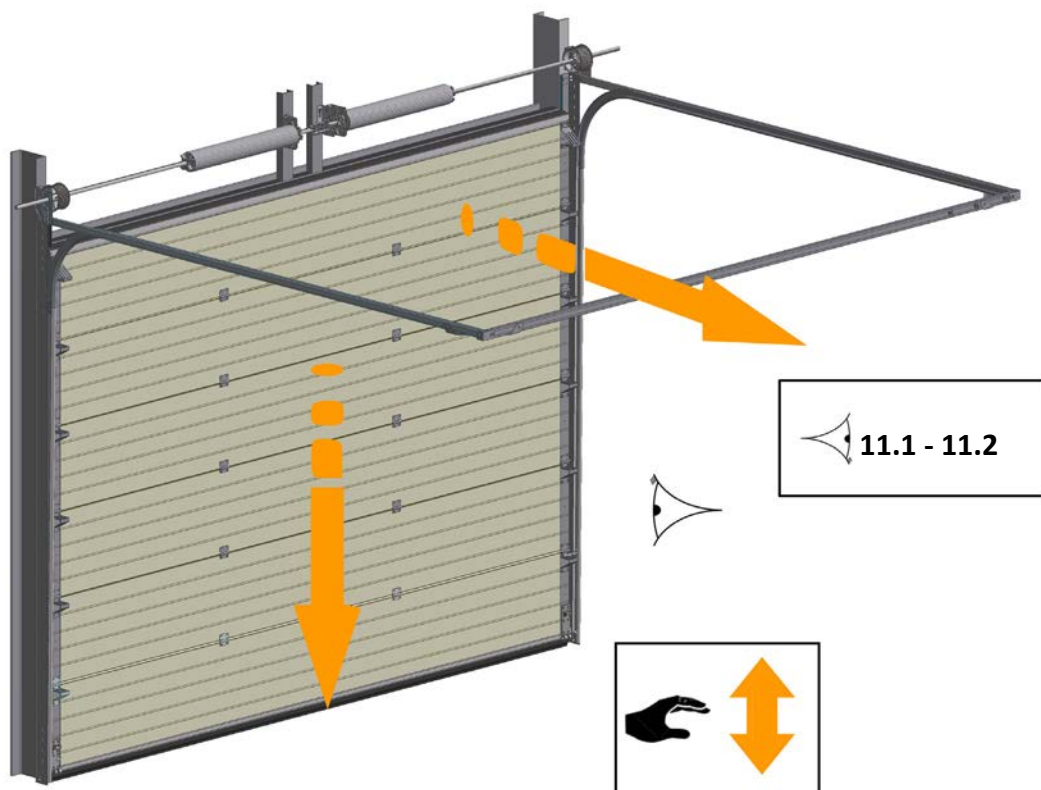
L+R



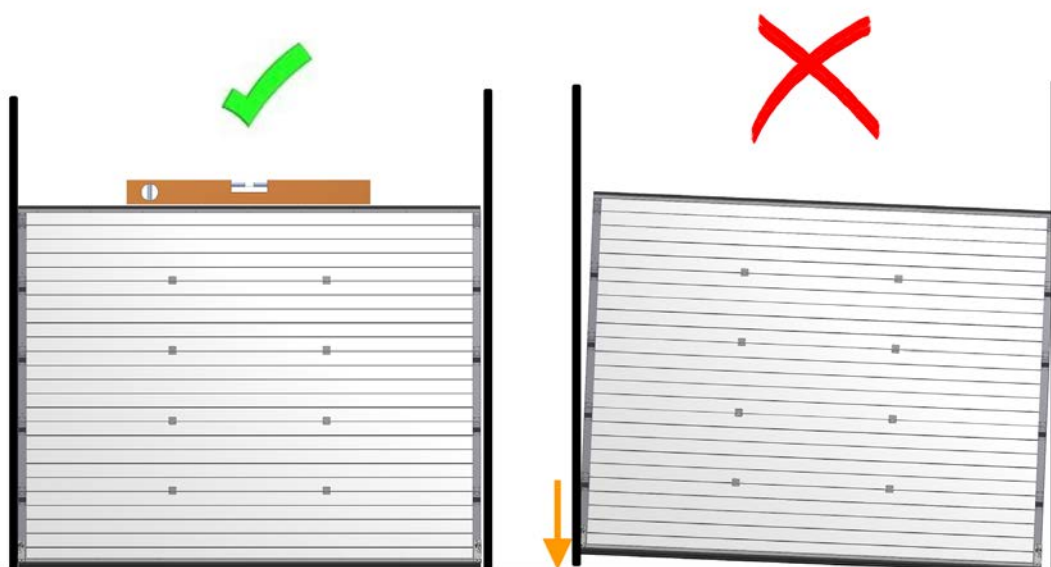
10.3



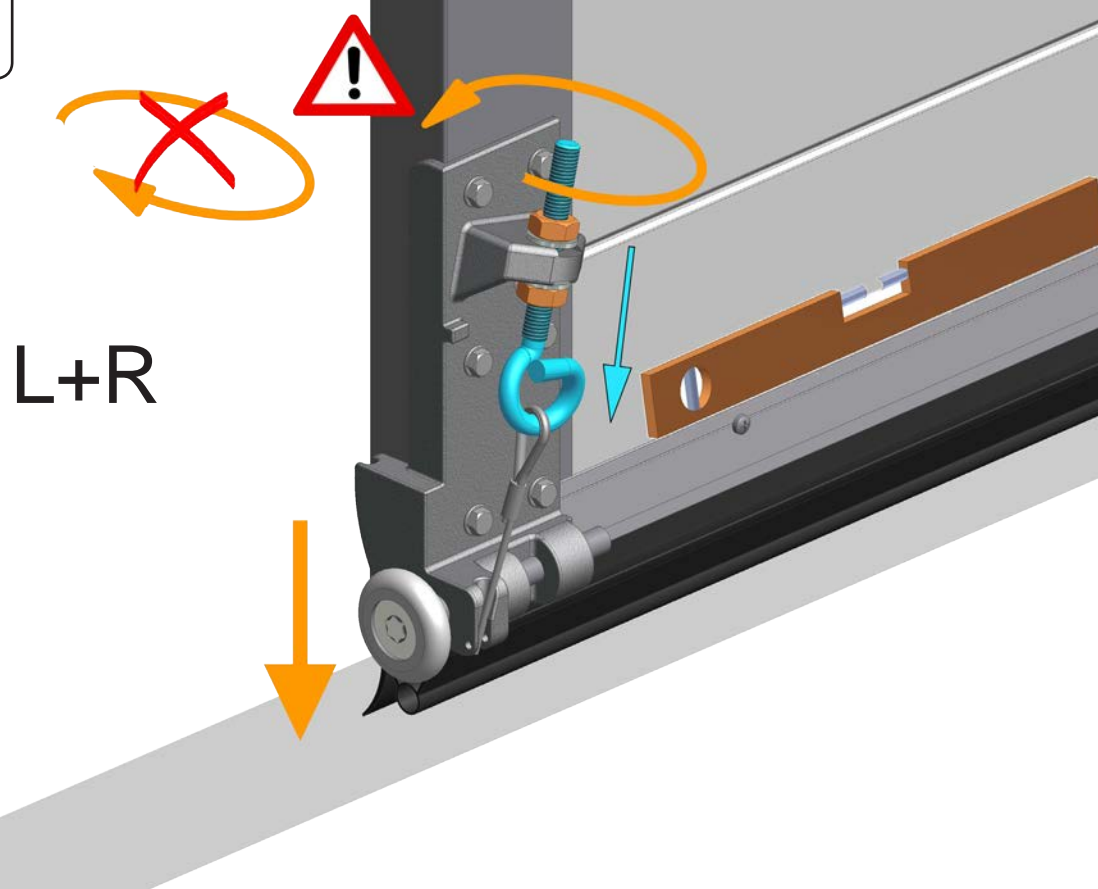
11



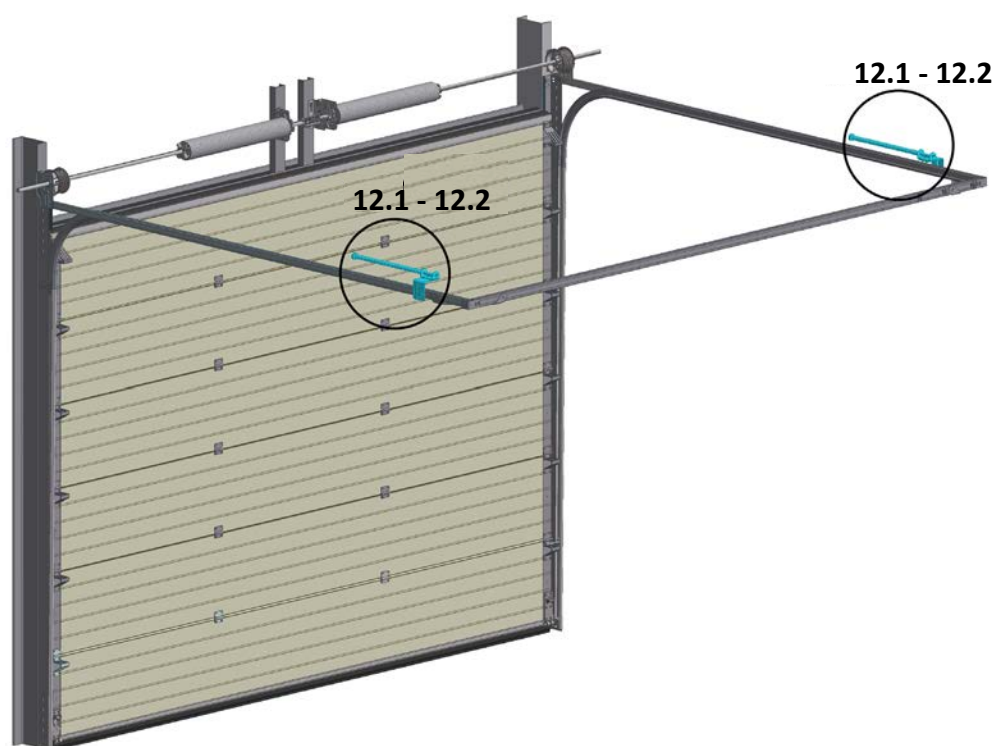
11.1



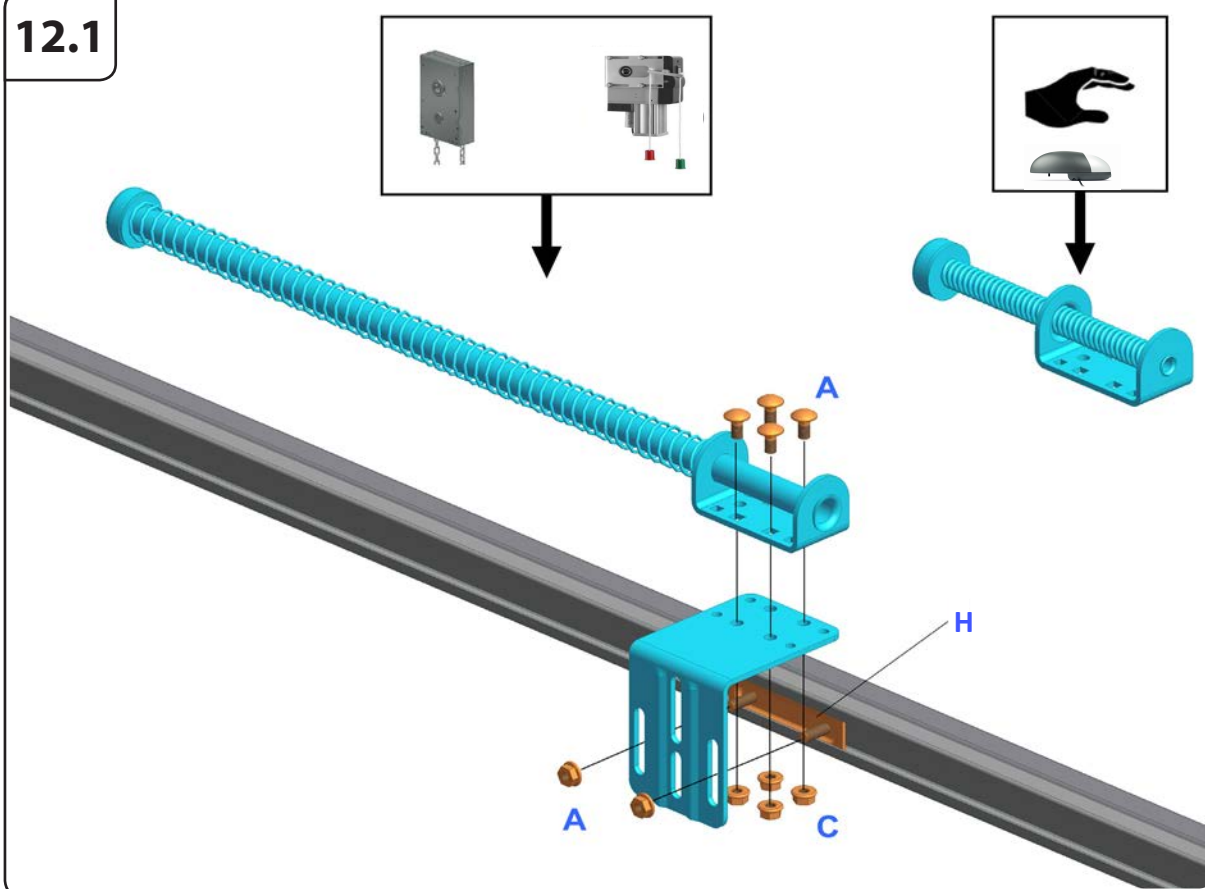
11.2



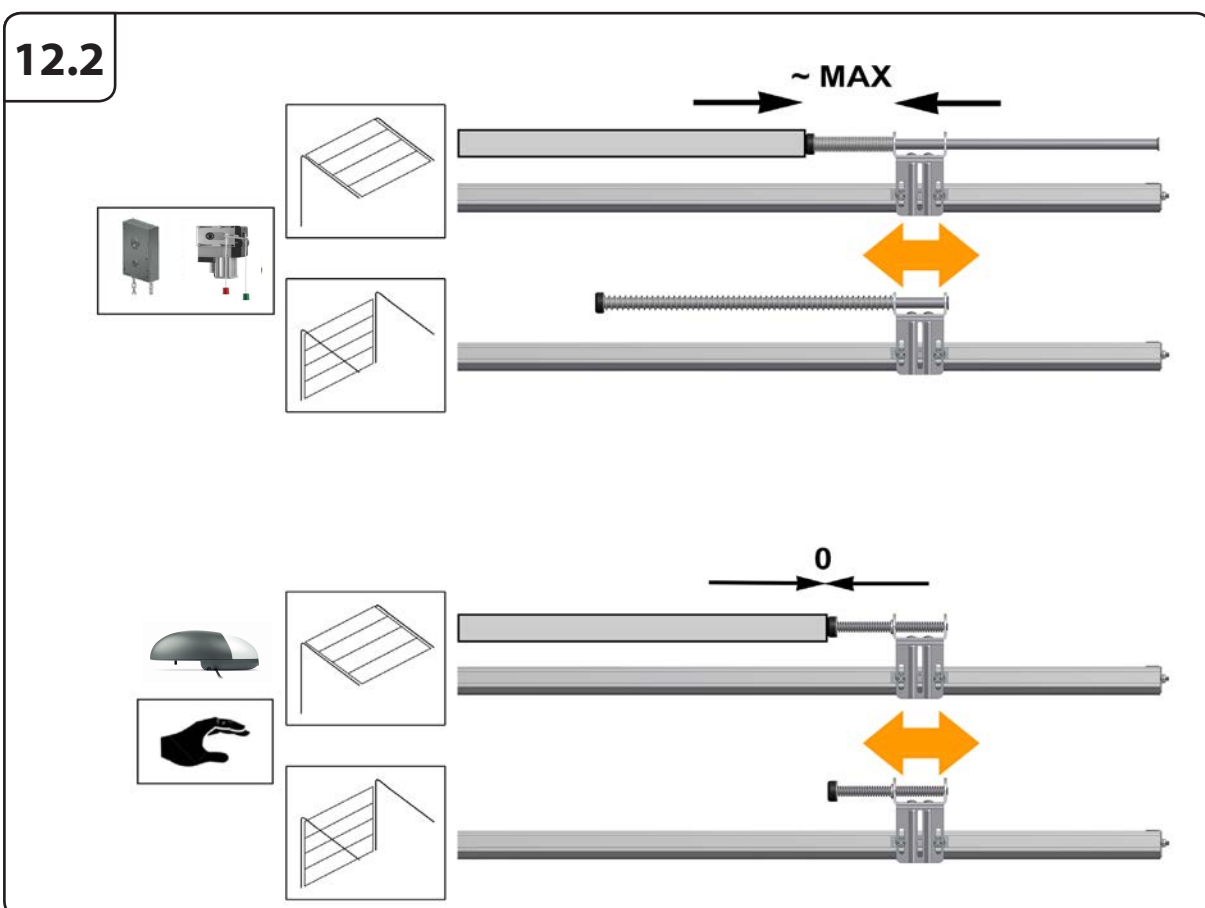
12



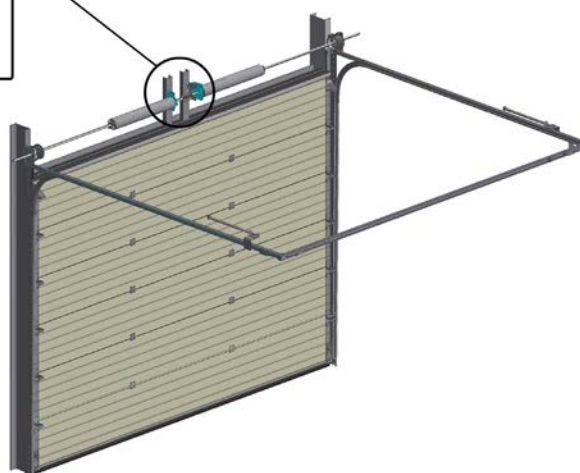
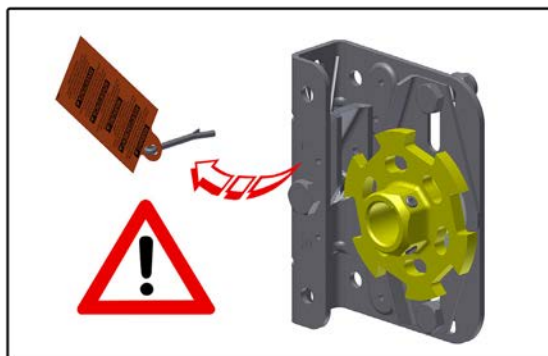
12.1



12.2



13



## Operating the door:

EN

- When operating the door, always make sure that there are no objects or persons within the door's range of movement;
- Don't stand or walk under the door then it moves;
- Open and close the door only using the supplied operating elements (manual chain hoist, rope or gear motor, handle);
- If the door is completed with gear motor, the door lock must be removed;
- In the event of door failure (sluggishness, some of lifting cables wires are broken, spring torque get weaker) contact the company which did install you the door;
- Once the spring or cable safety device has been activated contact the company which did install you the door;
- Do not alter or remove any functional parts by your self.

## MAINTENANCE

## Cleaning and care:

- Cleaning must be carried out at least every 3 months. All that's needed to clean the door is clear water (clean outside and inside of door, seals);
- Don't use any abrasive detergent or bristly brush.

## CLEANING

## Maintenance and repairs:

**Important:** Before using the door for the first time and least once a year thereafter, it should be checked and carried out by specialist.

- Check load carriers (cable, springs, tracks, supports, safety devices), replace any damaged components as necessary;
- The pivots of track rollers must be easy to turn when the door is closed; by opening and closing the rollers can't slip out from track;
- Check the weight counterbalance of the door leaf- open the door manually up to the half- way point, the door must be capable of holding this position; if the door moves visibly down, re-adjust the tension of the springs;
- Apply oil to the hinges and rollers holder. Do not apply grease to the trucks, they may be cleaned if necessary;
- Check for damage, deformations and completeness, if necessary, replace.

## REPAIRS

## Dismantling:

- The gates are dismantled in the reverse order than installation following the same safety requirements and using the same safety measures.

## DISMANTLING

Thank you for having chosen IDOMUS sectional door. We are confident that by the proper maintenance of sectional door it will give you satisfaction for many years.

**UAB "IDOMUS"**

V.Krėvės pr. 129, Kaunas

Tel./ fax.: 8-37 308 900

[info@idomus.lt](mailto:info@idomus.lt)

[www.idomus.lt](http://www.idomus.lt)